

## ARG41654 anti-Caspase 6 (full length + P11) antibody

Package: 100 µl  
Store at: -20°C

### Summary

Product Description	Rabbit Polyclonal antibody recognizes Caspase 6 (full length + P11)
Tested Reactivity	Hu, Ms, Rat
Tested Application	ICC/IF, IHC-P, IP, WB
Host	Rabbit
Clonality	Polyclonal
Isotype	IgG
Target Name	Caspase 6 (full length + P11)
Antigen Species	Human
Immunogen	Synthetic peptide of Human Caspase 6.
Conjugation	Un-conjugated
Alternate Names	MCH2; EC 3.4.22.59; CASP-6; Caspase-6; Apoptotic protease Mch-2

### Application Instructions

Application table	Application	Dilution
	ICC/IF	1:50 - 1:200
	IHC-P	1:50 - 1:200
	IP	1:50
	WB	1:500 - 1:1000
Application Note	* The dilutions indicate recommended starting dilutions and the optimal dilutions or concentrations should be determined by the scientist.	
Positive Control	Jurkat	
Calculated Mw	33 kDa	
Observed Size	~ 33 kDa	

### Properties

Form	Liquid
Purification	Affinity purified.
Buffer	PBS (pH 7.4), 150 mM NaCl, 0.02% Sodium azide and 50% Glycerol.
Preservative	0.02% Sodium azide
Stabilizer	50% Glycerol
Storage instruction	For continuous use, store undiluted antibody at 2-8°C for up to a week. For long-term storage, aliquot

and store at -20°C. Storage in frost free freezers is not recommended. Avoid repeated freeze/thaw cycles. Suggest spin the vial prior to opening. The antibody solution should be gently mixed before use.

**Note**

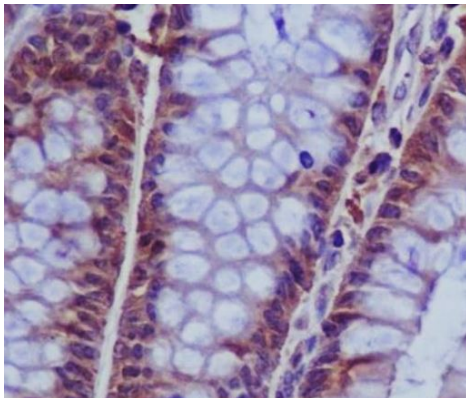
For laboratory research only, not for drug, diagnostic or other use.

## Bioinformation

---

Gene Symbol	CASP6
Gene Full Name	caspase 6, apoptosis-related cysteine peptidase
Background	This gene encodes a protein which is a member of the cysteine-aspartic acid protease (caspase) family. Sequential activation of caspases plays a central role in the execution-phase of cell apoptosis. Caspases exist as inactive proenzymes which undergo proteolytic processing at conserved aspartic residues to produce two subunits, large and small, that dimerize to form the active enzyme. This protein is processed by caspases 7, 8 and 10, and is thought to function as a downstream enzyme in the caspase activation cascade. Alternative splicing of this gene results in two transcript variants that encode different isoforms. [provided by RefSeq, Jul 2008]
Function	Involved in the activation cascade of caspases responsible for apoptosis execution. Cleaves poly(ADP-ribose) polymerase in vitro, as well as lamins. Overexpression promotes programmed cell death. [UniProt]
Cellular Localization	Cytoplasm. [UniProt]

## Images



ARG41654 anti-Caspase 6 (full length + P11) antibody IHC-P image

Immunohistochemistry: Paraffin-embedded Human colon tissue stained with ARG41654 anti-Caspase 6 (full length + P11) antibody.



ARG41654 anti-Caspase 6 (full length + P11) antibody WB image

Western blot: Jurkat cell lysate stained with ARG41654 anti-Caspase 6 (full length + P11) antibody.