

ARG41637 anti-ABCG1 antibody

Package: 50 µg
Store at: -20°C

Summary

Product Description	Rabbit Polyclonal antibody recognizes ABCG1
Tested Reactivity	Hu
Predict Reactivity	Ms, Rat, Hm
Tested Application	WB
Host	Rabbit
Clonality	Polyclonal
Isotype	IgG
Target Name	ABCG1
Species	Human
Immunogen	Synthetic peptide corresponding to aa. 627-647 of Human ABCG1. (ETCHFQKSEAILRELDVENAK)
Conjugation	Un-conjugated
Alternate Names	White protein homolog; WHITE1; ATP-binding cassette transporter 8; ABC8; ATP-binding cassette sub-family G member 1

Application Instructions

Application table	Application	Dilution
	WB	1:500 - 1:2000
Application Note	* The dilutions indicate recommended starting dilutions and the optimal dilutions or concentrations should be determined by the scientist.	
Observed Size	~ 77 kDa	

Properties

Form	Liquid
Purification	Affinity purification with immunogen.
Buffer	0.2% Na ₂ HPO ₄ , 0.9% NaCl, 0.05% Thimerosal, 0.05% Sodium azide and 5% BSA.
Preservative	0.05% Thimerosal and 0.05% Sodium azide
Stabilizer	5% BSA
Concentration	0.5 mg/ml
Storage instruction	For continuous use, store undiluted antibody at 2-8°C for up to a week. For long-term storage, aliquot and store at -20°C or below. Storage in frost free freezers is not recommended. Avoid repeated freeze/thaw cycles. Suggest spin the vial prior to opening. The antibody solution should be gently mixed before use.

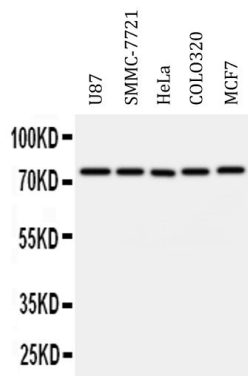
Note

For laboratory research only, not for drug, diagnostic or other use.

Bioinformation

Gene Symbol	ABCG1
Gene Full Name	ATP-binding cassette, sub-family G (WHITE), member 1
Background	The protein encoded by this gene is a member of the superfamily of ATP-binding cassette (ABC) transporters. ABC proteins transport various molecules across extra- and intra-cellular membranes. ABC genes are divided into seven distinct subfamilies (ABC1, MDR/TAP, MRP, ALD, OABP, GCN20, White). This protein is a member of the White subfamily. It is involved in macrophage cholesterol and phospholipids transport, and may regulate cellular lipid homeostasis in other cell types. Six alternative splice variants have been identified. [provided by RefSeq, Jul 2008]
Function	Transporter involved in macrophage lipid homeostasis. Is an active component of the macrophage lipid export complex. Could also be involved in intracellular lipid transport processes. The role in cellular lipid homeostasis may not be limited to macrophages. [UniProt]
Calculated Mw	76 kDa
PTM	Palmitoylation at Cys-315 seems important for trafficking from the endoplasmic reticulum. [UniProt]
Cellular Localization	Endoplasmic reticulum membrane; Multi-pass membrane protein. Golgi apparatus membrane; Multi-pass membrane protein. Note=Predominantly localized in the intracellular compartments mainly associated with the endoplasmic reticulum (ER) and Golgi membranes. [UniProt]

Images



ARG41637 anti-ABCG1 antibody WB image

Western blot: 40 µg of U87, SMMC-7721, HeLa, COLO320 and MCF7 whole cell lysates stained with ARG41637 anti-ABCG1 antibody at 0.5 µg/ml dilution.