

ARG41587 anti-CDC23 antibody

Package: 100 µl
Store at: -20°C

Summary

Product Description	Rabbit Polyclonal antibody recognizes CDC23
Tested Reactivity	Hu, Ms, Rat
Tested Application	IHC-P, WB
Host	Rabbit
Clonality	Polyclonal
Isotype	IgG
Target Name	CDC23
Species	Human
Immunogen	Synthetic peptide within aa. 50-150 of Human CDC23 (NP_004652.2).
Conjugation	Un-conjugated
Alternate Names	CUT23; Cell division cycle protein 23 homolog; ANAPC8; APC8; Anaphase-promoting complex subunit 8; Cyclosome subunit 8

Application Instructions

Application table	Application	Dilution
	IHC-P	1:100 - 1:200
	WB	1:500 - 1:2000
Application Note	* The dilutions indicate recommended starting dilutions and the optimal dilutions or concentrations should be determined by the scientist.	
Positive Control	Jurkat	
Observed Size	~ 63 kDa	

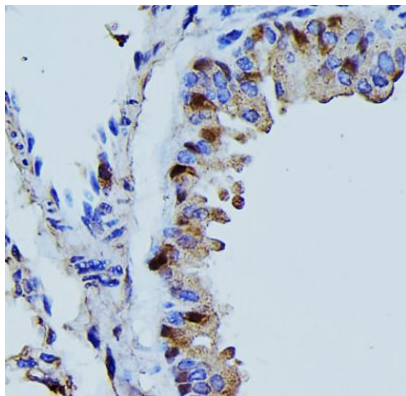
Properties

Form	Liquid
Purification	Affinity purified.
Buffer	PBS (pH 7.3), 0.02% Sodium azide and 50% Glycerol.
Preservative	0.02% Sodium azide
Stabilizer	50% Glycerol
Storage instruction	For continuous use, store undiluted antibody at 2-8°C for up to a week. For long-term storage, aliquot and store at -20°C. Storage in frost free freezers is not recommended. Avoid repeated freeze/thaw cycles. Suggest spin the vial prior to opening. The antibody solution should be gently mixed before use.
Note	For laboratory research only, not for drug, diagnostic or other use.

Bioinformation

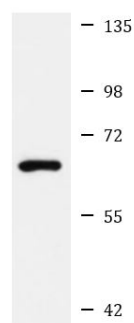
Gene Symbol	CDC23
Gene Full Name	cell division cycle 23
Background	The protein encoded by this gene shares strong similarity with <i>Saccharomyces cerevisiae</i> Cdc23, a protein essential for cell cycle progression through the G2/M transition. This protein is a component of anaphase-promoting complex (APC), which is composed of eight protein subunits and highly conserved in eukaryotic cells. APC catalyzes the formation of cyclin B-ubiquitin conjugate that is responsible for the ubiquitin-mediated proteolysis of B-type cyclins. This protein and 3 other members of the APC complex contain the TPR (tetratricopeptide repeat), a protein domain important for protein-protein interaction. [provided by RefSeq, Jul 2008]
Function	Component of the anaphase promoting complex/cyclosome (APC/C), a cell cycle-regulated E3 ubiquitin ligase that controls progression through mitosis and the G1 phase of the cell cycle. The APC/C complex acts by mediating ubiquitination and subsequent degradation of target proteins: it mainly mediates the formation of 'Lys-11'-linked polyubiquitin chains and, to a lower extent, the formation of 'Lys-48'- and 'Lys-63'-linked polyubiquitin chains. [UniProt]
Calculated Mw	69 kDa
PTM	Phosphorylated. Phosphorylation on Thr-562 occurs specifically during mitosis. [UniProt]

Images



ARG41587 anti-CDC23 antibody IHC-P image

Immunohistochemistry: Paraffin-embedded Mouse lung tissue stained with ARG41587 anti-CDC23 antibody at 1:100 dilution.



Jurkat

ARG41587 anti-CDC23 antibody WB image

Western blot: 25 µg of Jurkat cell lysate stained with ARG41587 anti-CDC23 antibody at 1:1000 dilution.