

## ARG41573 anti-CD154 / CD40L antibody

Package: 50 µg  
Store at: -20°C

### Summary

Product Description	Rabbit Polyclonal antibody recognizes CD154 / CD40L
Tested Reactivity	Hu, Ms, Rat
Tested Application	WB
Host	Rabbit
Clonality	Polyclonal
Isotype	IgG
Target Name	CD154 / CD40L
Species	Human
Immunogen	Synthetic peptide corresponding to a sequence of Human CD154 / CD40L. (KEETKKENSFEMQKGDQNPQIAAHVISEA)
Conjugation	Un-conjugated
Alternate Names	TNFSF5; IMD3; T-cell antigen Gp39; HIGM1; CD40-L; gp39; CD40 ligand; Tumor necrosis factor ligand superfamily member 5; CD40L; CD154; TRAP; CD antigen CD154; hCD40L; IGM; T-BAM; TNF-related activation protein

### Application Instructions

Application table	<table><thead><tr><th>Application</th><th>Dilution</th></tr></thead><tbody><tr><td>WB</td><td>1:500 - 1:2000</td></tr></tbody></table>	Application	Dilution	WB	1:500 - 1:2000
Application	Dilution				
WB	1:500 - 1:2000				
Application Note	* The dilutions indicate recommended starting dilutions and the optimal dilutions or concentrations should be determined by the scientist.				
Observed Size	~ 36 kDa				

### Properties

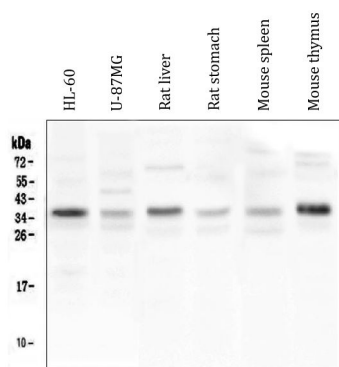
Form	Liquid
Purification	Affinity purification with immunogen.
Buffer	0.2% Na <sub>2</sub> HPO <sub>4</sub> , 0.9% NaCl, 0.05% Sodium azide and 4% Trehalose.
Preservative	0.05% Sodium azide
Stabilizer	4% Trehalose
Concentration	0.5 mg/ml
Storage instruction	For continuous use, store undiluted antibody at 2-8°C for up to a week. For long-term storage, aliquot and store at -20°C or below. Storage in frost free freezers is not recommended. Avoid repeated freeze/thaw cycles. Suggest spin the vial prior to opening. The antibody solution should be gently mixed before use.

Note For laboratory research only, not for drug, diagnostic or other use.

## Bioinformation

Gene Symbol	CD40LG
Gene Full Name	CD40 ligand
Background	The protein encoded by this gene is expressed on the surface of T cells. It regulates B cell function by engaging CD40 on the B cell surface. A defect in this gene results in an inability to undergo immunoglobulin class switch and is associated with hyper-IgM syndrome. [provided by RefSeq, Jul 2008]
Function	Mediates B-cell proliferation in the absence of co-stimulus as well as IgE production in the presence of IL-4. Involved in immunoglobulin class switching.  Release of soluble CD40L from platelets is partially regulated by GP IIb/IIIa, actin polymerization, and an matrix metalloproteinases (MMP) inhibitor-sensitive pathway. [UniProt]
Calculated Mw	29 kDa
PTM	The soluble form derives from the membrane form by proteolytic processing.  N-linked glycan is a mixture of high mannose and complex type. Glycan structure does not influence binding affinity to CD40.  Not O-glycosylated. [UniProt]
Cellular Localization	Cell membrane; Single-pass type II membrane protein. Cell surface. CD40 ligand, soluble form: Secreted. [UniProt]

## Images



ARG41573 anti-CD154 / CD40L antibody WB image

Western blot: 50 µg of samples under reducing conditions. HL-60, U-87MG, Rat liver, Rat stomach, Mouse spleen and Mouse thymus lysates stained with ARG41573 anti-CD154 / CD40L antibody at 0.5 µg/ml dilution, overnight at 4°C.