

## ARG41563 anti-DDX4 antibody

Package: 50 µg  
Store at: -20°C

### Summary

Product Description	Rabbit Polyclonal antibody recognizes DDX4
Tested Reactivity	Hu, Ms, Rat
Predict Reactivity	Hm
Tested Application	FACS, ICC/IF, IHC-Fr, IHC-P, WB
Host	Rabbit
Clonality	Polyclonal
Isotype	IgG
Target Name	DDX4
Species	Human
Immunogen	Synthetic peptide corresponding to aa. 253-272 of Human DDX4. (EEDSIFAHYQTGINFDKYD)
Conjugation	Un-conjugated
Alternate Names	Probable ATP-dependent RNA helicase DDX4; VASA; Vasa homolog; DEAD box protein 4; EC 3.6.4.13

### Application Instructions

Application table	Application	Dilution
	FACS	1:150 - 1:500
	ICC/IF	1:200 - 1:1000
	IHC-Fr	1:200 - 1:1000
	IHC-P	1:200 - 1:1000
	WB	1:500 - 1:2000
Application Note	IHC-P: Antigen Retrieval: Heat mediation was performed in Citrate buffer (pH 6.0, epitope retrieval solution) for 20 min. * The dilutions indicate recommended starting dilutions and the optimal dilutions or concentrations should be determined by the scientist.	
Observed Size	~ 80 kDa	

### Properties

Form	Liquid
Purification	Affinity purification with immunogen.
Buffer	0.2% Na <sub>2</sub> HPO <sub>4</sub> , 0.9% NaCl, 0.05% Thimerosal, 0.05% Sodium azide and 5% BSA.
Preservative	0.05% Thimerosal and 0.05% Sodium azide

Stabilizer	5% BSA
Concentration	0.5 mg/ml
Storage instruction	For continuous use, store undiluted antibody at 2-8°C for up to a week. For long-term storage, aliquot and store at -20°C or below. Storage in frost free freezers is not recommended. Avoid repeated freeze/thaw cycles. Suggest spin the vial prior to opening. The antibody solution should be gently mixed before use.
Note	For laboratory research only, not for drug, diagnostic or other use.

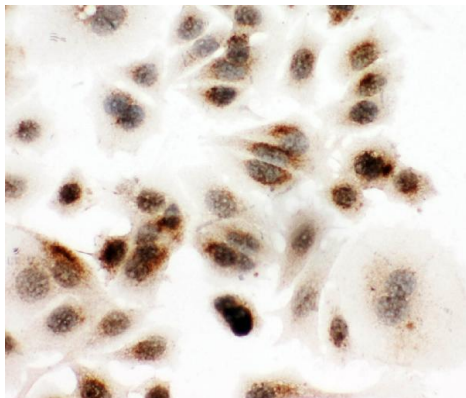
## Bioinformation

---

Gene Symbol	DDX4
Gene Full Name	DEAD (Asp-Glu-Ala-Asp) box polypeptide 4
Background	DEAD box proteins, characterized by the conserved motif Asp-Glu-Ala-Asp (DEAD), are putative RNA helicases. They are implicated in a number of cellular processes involving alteration of RNA secondary structure such as translation initiation, nuclear and mitochondrial splicing, and ribosome and spliceosome assembly. Based on their distribution patterns, some members of this family are believed to be involved in embryogenesis, spermatogenesis, and cellular growth and division. This gene encodes a DEAD box protein, which is a homolog of VASA proteins in <i>Drosophila</i> and several other species. The gene is specifically expressed in the germ cell lineage in both sexes and functions in germ cell development. Multiple transcript variants encoding different isoforms have been found for this gene. [provided by RefSeq, Oct 2009]
Function	May play a role in germ cell development. May play a role in sperm motility. [UniProt]
Calculated Mw	79 kDa
Cellular Localization	Cytoplasm. Cytoplasm, perinuclear region. Note=Component of the meiotic nuage, also named P granule, a germ-cell-specific organelle required to repress transposon activity during meiosis. [UniProt]

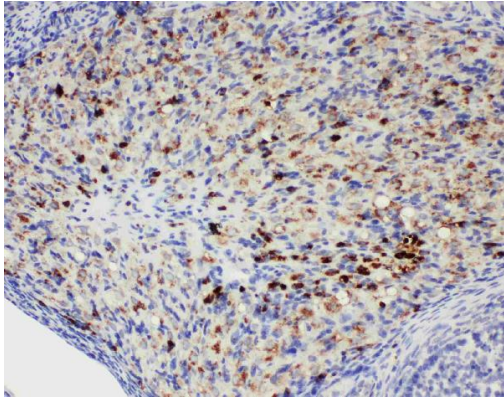
## Images

---



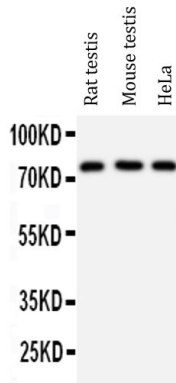
ARG41563 anti-DDX4 antibody ICC/IF image

Immunocytochemistry: MCF7 cells stained with ARG41563 anti-DDX4 antibody.



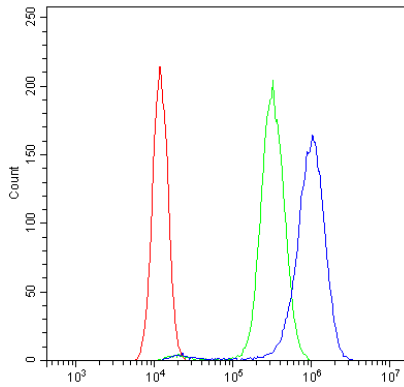
ARG41563 anti-DDX4 antibody IHC-P image

Immunohistochemistry: Paraffin-embedded Rat ovary tissue stained with ARG41563 anti-DDX4 antibody.



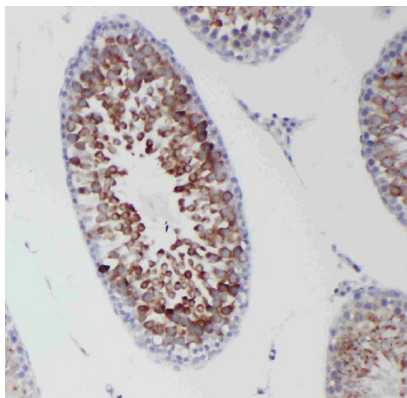
ARG41563 anti-DDX4 antibody WB image

Western blot: Rat testis, Mouse testis and HeLa cell lysates stained with ARG41563 anti-DDX4 antibody.



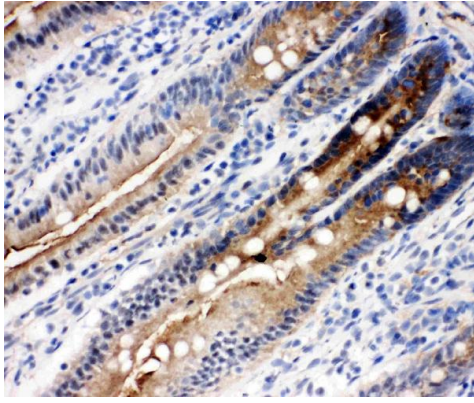
ARG41563 anti-DDX4 antibody FACS image

Flow Cytometry: SiHa cells were blocked with 10% normal Goat serum and then stained with ARG41563 anti-DDX4 antibody (blue) at  $1 \mu\text{g}/10^6$  cells for 30 min at  $20^\circ\text{C}$ , followed by incubation with DyLight<sup>®</sup>488 labelled secondary antibody. Isotype control antibody (green) was Rabbit IgG ( $1 \mu\text{g}/10^6$  cells) used under the same conditions. Unlabelled sample (red) was also used as a control.



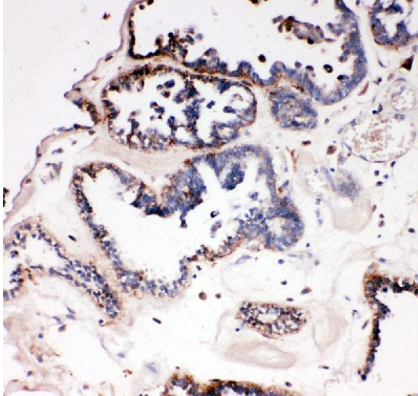
ARG41563 anti-DDX4 antibody IHC-P image

Immunohistochemistry: Paraffin-embedded Rat testis tissue stained with ARG41563 anti-DDX4 antibody.



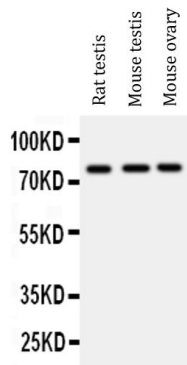
#### ARG41563 anti-DDX4 antibody IHC-Fr image

Immunohistochemistry: Frozen section of Rat intestine tissue stained with ARG41563 anti-DDX4 antibody.



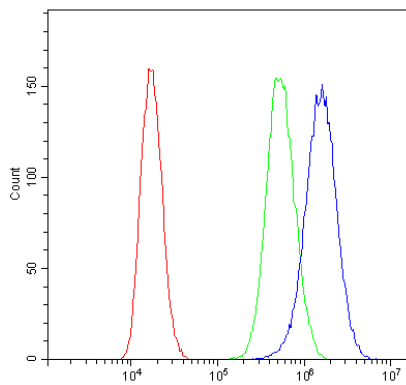
#### ARG41563 anti-DDX4 antibody IHC-P image

Immunohistochemistry: Paraffin-embedded Human ovarian cancer tissue. Antigen Retrieval: Heat mediation was performed in Citrate buffer (pH 6.0, epitope retrieval solution) for 20 min. The tissue section was blocked with 10% goat serum. The tissue section was then stained with ARG41563 anti-DDX4 antibody at 1  $\mu\text{g}/\text{ml}$  dilution, overnight at 4°C.



#### ARG41563 anti-DDX4 antibody WB image

Western blot: Rat testis, Mouse testis and Mouse ovary lysates stained with ARG41563 anti-DDX4 antibody.



#### ARG41563 anti-DDX4 antibody FACS image

Flow Cytometry: PC-3 cells were blocked with 10% normal Goat serum and then stained with ARG41563 anti-DDX4 antibody (blue) at 1  $\mu\text{g}/10^6$  cells for 30 min at 20°C, followed by incubation with DyLight®488 labelled secondary antibody. Isotype control antibody (green) was Rabbit IgG (1  $\mu\text{g}/10^6$  cells) used under the same conditions. Unlabelled sample (red) was also used as a control.