

ARG41514
anti-Myosin Light Chain 2 antibodyPackage: 100 µl
Store at: -20°C

Summary

Product Description	Rabbit Polyclonal antibody recognizes Myosin Light Chain 2
Tested Reactivity	Hu, Ms, Rat
Tested Application	IHC-P, IP, WB
Host	Rabbit
Clonality	Polyclonal
Isotype	IgG
Target Name	Myosin Light Chain 2
Species	Human
Immunogen	Synthetic peptide of Human Myosin Light Chain 2.
Conjugation	Un-conjugated
Alternate Names	MLC2; Myosin regulatory light chain 2, ventricular/cardiac muscle isoform; CMH10; MLC-2; MLC-2v

Application Instructions

Application table	Application	Dilution
	IHC-P	1:50 - 1:200
	IP	1:50
	WB	1:1000 - 1:5000
Application Note	* The dilutions indicate recommended starting dilutions and the optimal dilutions or concentrations should be determined by the scientist.	
Positive Control	Mouse heart	
Observed Size	19 kDa	

Properties

Form	Liquid
Purification	Affinity purified.
Buffer	PBS (pH 7.4), 150 mM NaCl, 0.02% Sodium azide and 50% Glycerol.
Preservative	0.02% Sodium azide
Stabilizer	50% Glycerol
Storage instruction	For continuous use, store undiluted antibody at 2-8°C for up to a week. For long-term storage, aliquot and store at -20°C. Storage in frost free freezers is not recommended. Avoid repeated freeze/thaw cycles. Suggest spin the vial prior to opening. The antibody solution should be gently mixed before use.

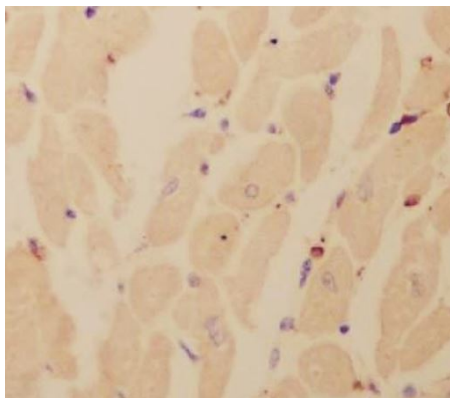
Note

For laboratory research only, not for drug, diagnostic or other use.

Bioinformation

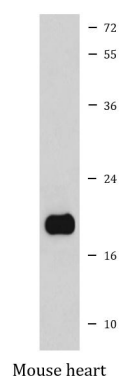
Gene Symbol	MYL2
Gene Full Name	myosin, light chain 2, regulatory, cardiac, slow
Background	This gene encodes the regulatory light chain associated with cardiac myosin beta (or slow) heavy chain. Ca ⁺ triggers the phosphorylation of regulatory light chain that in turn triggers contraction. Mutations in this gene are associated with mid-left ventricular chamber type hypertrophic cardiomyopathy. [provided by RefSeq, Jul 2008]
Calculated Mw	19 kDa
PTM	N-terminus is methylated by METTL11A/NTM1. Phosphorylated by MYLK3 and MYLK2; promotes cardiac muscle contraction and function (By similarity). Dephosphorylated by PPP1CB complexed to PPP1R12B (By similarity). The phosphorylated form in adult is expressed as gradients across the heart from endocardium (low phosphorylation) to epicardium (high phosphorylation); regulates cardiac torsion and workload distribution (By similarity). [UniProt]
Cellular Localization	Cytoplasm, myofibril, sarcomere, A band. [UniProt]

Images



ARG41514 anti-Myosin Light Chain 2 antibody IHC-P image

Immunohistochemistry: Paraffin-embedded Human heart tissue stained with ARG41514 anti-Myosin Light Chain 2 antibody.



ARG41514 anti-Myosin Light Chain 2 antibody WB image

Western blot: Mouse heart lysate stained with ARG41514 anti-Myosin Light Chain 2 antibody.