

ARG41484 anti-CD18 / LFA1 beta antibody

Package: 100 µl
Store at: -20°C

Summary

Product Description	Rabbit Polyclonal antibody recognizes CD18 / LFA1 beta
Tested Reactivity	Hu, Ms, Rat
Tested Application	ICC/IF, IHC-P, WB
Host	Rabbit
Clonality	Polyclonal
Isotype	IgG
Target Name	CD18 / LFA1 beta
Species	Human
Immunogen	Recombinant protein of Human CD18 / LFA1 beta.
Conjugation	Un-conjugated
Alternate Names	MF17; LAD; CD antigen CD18; MFI7; MAC-1; Cell surface adhesion glycoproteins LFA-1/CR3/p150,95 subunit beta; LCAMB; Integrin beta-2; Complement receptor C3 subunit beta; LFA-1; CD18

Application Instructions

Application table	Application	Dilution
	ICC/IF	1:50 - 1:200
	IHC-P	1:50 - 1:200
	WB	1:500 - 1:2000
Application Note	* The dilutions indicate recommended starting dilutions and the optimal dilutions or concentrations should be determined by the scientist.	
Positive Control	Mouse thymus	
Observed Size	~ 98 kDa	

Properties

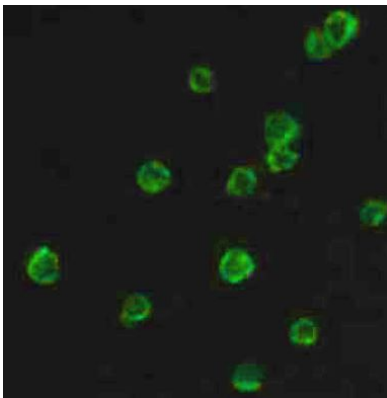
Form	Liquid
Purification	Affinity purified.
Buffer	PBS (pH 7.3), 0.02% Sodium azide and 50% Glycerol.
Preservative	0.02% Sodium azide
Stabilizer	50% Glycerol
Storage instruction	For continuous use, store undiluted antibody at 2-8°C for up to a week. For long-term storage, aliquot and store at -20°C. Storage in frost free freezers is not recommended. Avoid repeated freeze/thaw cycles. Suggest spin the vial prior to opening. The antibody solution should be gently mixed before use.

Note For laboratory research only, not for drug, diagnostic or other use.

Bioinformation

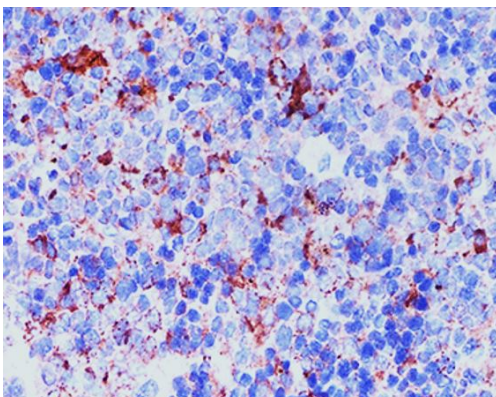
Gene Symbol	ITGB2
Gene Full Name	integrin, beta 2 (complement component 3 receptor 3 and 4 subunit)
Background	This gene encodes an integrin beta chain, which combines with multiple different alpha chains to form different integrin heterodimers. Integrins are integral cell-surface proteins that participate in cell adhesion as well as cell-surface mediated signalling. The encoded protein plays an important role in immune response and defects in this gene cause leukocyte adhesion deficiency. Alternative splicing results in multiple transcript variants. [provided by RefSeq, Dec 2014]
Function	Integrin alpha-L/beta-2 is a receptor for ICAM1, ICAM2, ICAM3 and ICAM4. Integrins alpha-M/beta-2 and alpha-X/beta-2 are receptors for the iC3b fragment of the third complement component and for fibrinogen. Integrin alpha-X/beta-2 recognizes the sequence G-P-R in fibrinogen alpha-chain. Integrin alpha-M/beta-2 recognizes P1 and P2 peptides of fibrinogen gamma chain. Integrin alpha-M/beta-2 is also a receptor for factor X. Integrin alpha-D/beta-2 is a receptor for ICAM3 and VCAM1. Triggers neutrophil transmigration during lung injury through PTK2B/PYK2-mediated activation. [UniProt]
Calculated Mw	85 kDa
PTM	Both Ser-745 and Ser-756 become phosphorylated when T-cells are exposed to phorbol esters (PubMed:11700305). Phosphorylation on Thr-758 (but not on Ser-756) allows interaction with 14-3-3 proteins (PubMed:11700305, PubMed:16301335). [UniProt]
Cellular Localization	Cell membrane; Single-pass type I membrane protein. Membrane raft; Single-pass type I membrane protein. [UniProt]

Images



ARG41484 anti-CD18 / LFA1 beta antibody ICC/IF image

Immunofluorescence: RAW264.7 cells stained with ARG41484 anti-CD18 / LFA1 beta antibody at 1:100 dilution.



ARG41484 anti-CD18 / LFA1 beta antibody IHC-P image

Immunohistochemistry: Paraffin-embedded Mouse spleen tissue stained with ARG41484 anti-CD18 / LFA1 beta antibody at 1:100 dilution.

ARG41484 anti-CD18 / LFA1 beta antibody WB image

Western blot: 25 µg of Mouse thymus lysate stained with ARG41484 anti-CD18 / LFA1 beta antibody at 1:1000 dilution.

