

ARG41476 anti-alpha 2 Macroglobulin antibody

Package: 100 µl
Store at: -20°C

Summary

Product Description	Rabbit Polyclonal antibody recognizes alpha 2 Macroglobulin
Tested Reactivity	Hu, Ms, Rat
Tested Application	WB
Host	Rabbit
Clonality	Polyclonal
Isotype	IgG
Target Name	alpha 2 Macroglobulin
Species	Human
Immunogen	Recombinant fusion protein corresponding to aa. 1155-1474 of Human alpha 2 Macroglobulin (NP_000005.2).
Conjugation	Un-conjugated
Alternate Names	CPAMD5; Alpha-2-macroglobulin; S863-7; FWP007; Alpha-2-M; A2MD; C3 and PZP-like alpha-2-macroglobulin domain-containing protein 5

Application Instructions

Application table	Application	Dilution
	WB	1:500 - 1:2000
Application Note	* The dilutions indicate recommended starting dilutions and the optimal dilutions or concentrations should be determined by the scientist.	
Positive Control	Rat spinal cord	
Observed Size	~ 165 kDa	

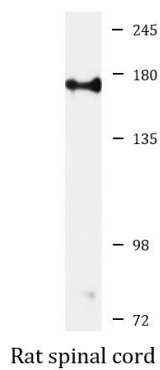
Properties

Form	Liquid
Purification	Affinity purified.
Buffer	PBS (pH 7.3), 0.02% Sodium azide and 50% Glycerol.
Preservative	0.02% Sodium azide
Stabilizer	50% Glycerol
Storage instruction	For continuous use, store undiluted antibody at 2-8°C for up to a week. For long-term storage, aliquot and store at -20°C. Storage in frost free freezers is not recommended. Avoid repeated freeze/thaw cycles. Suggest spin the vial prior to opening. The antibody solution should be gently mixed before use.
Note	For laboratory research only, not for drug, diagnostic or other use.

Bioinformation

Gene Symbol	A2M
Gene Full Name	alpha-2-macroglobulin
Background	Alpha-2-macroglobulin is a protease inhibitor and cytokine transporter. It inhibits many proteases, including trypsin, thrombin and collagenase. A2M is implicated in Alzheimer disease (AD) due to its ability to mediate the clearance and degradation of A-beta, the major component of beta-amyloid deposits. [provided by RefSeq, Jul 2008]
Function	Is able to inhibit all four classes of proteinases by a unique 'trapping' mechanism. This protein has a peptide stretch, called the 'bait region' which contains specific cleavage sites for different proteinases. When a proteinase cleaves the bait region, a conformational change is induced in the protein which traps the proteinase. The entrapped enzyme remains active against low molecular weight substrates (activity against high molecular weight substrates is greatly reduced). Following cleavage in the bait region a thioester bond is hydrolyzed and mediates the covalent binding of the protein to the proteinase. [UniProt]
Calculated Mw	163 kDa
Cellular Localization	Secreted. [UniProt]

Images



ARG41476 anti-alpha 2 Macroglobulin antibody WB image

Western blot: 25 µg of Rat spinal cord lysate stained with ARG41476 anti-alpha 2 Macroglobulin antibody at 1:500 dilution.