

## ARG41454 anti-serum Amyloid A antibody

Package: 100 µl  
Store at: -20°C

### Summary

Product Description	Rabbit Polyclonal antibody recognizes serum Amyloid A
Tested Reactivity	Hu
Tested Application	IHC-P, WB
Host	Rabbit
Clonality	Polyclonal
Isotype	IgG
Target Name	serum Amyloid A
Species	Human
Immunogen	Synthetic peptide of Human serum Amyloid A.
Conjugation	Un-conjugated
Alternate Names	2-104; 2-103; 2-102; Serum amyloid A-1 protein; TP53I4; SAA; Amyloid fibril protein AA; SAA2; PIG4; 4-101; 3-104

### Application Instructions

Application table	Application	Dilution
	IHC-P	1:50 - 1:200
	WB	1:500 - 1:2000
Application Note	* The dilutions indicate recommended starting dilutions and the optimal dilutions or concentrations should be determined by the scientist.	
Positive Control	Human plasma	
Observed Size	~ 12 kDa	

### Properties

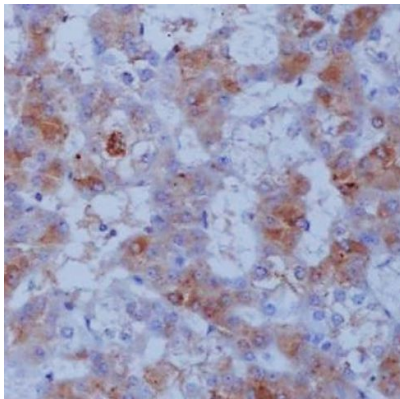
Form	Liquid
Purification	Affinity purified.
Buffer	PBS (pH 7.4), 150 mM NaCl, 0.02% Sodium azide and 50% Glycerol.
Preservative	0.02% Sodium azide
Stabilizer	50% Glycerol
Storage instruction	For continuous use, store undiluted antibody at 2-8°C for up to a week. For long-term storage, aliquot and store at -20°C. Storage in frost free freezers is not recommended. Avoid repeated freeze/thaw cycles. Suggest spin the vial prior to opening. The antibody solution should be gently mixed before use.
Note	For laboratory research only, not for drug, diagnostic or other use.

## Bioinformation

---

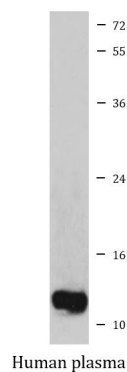
Gene Symbol	SAA1
Gene Full Name	serum amyloid A1
Background	This gene encodes a member of the serum amyloid A family of apolipoproteins. The encoded protein is a major acute phase protein that is highly expressed in response to inflammation and tissue injury. This protein also plays an important role in HDL metabolism and cholesterol homeostasis. High levels of this protein are associated with chronic inflammatory diseases including atherosclerosis, rheumatoid arthritis, Alzheimer's disease and Crohn's disease. This protein may also be a potential biomarker for certain tumors. Alternate splicing results in multiple transcript variants that encode the same protein. A pseudogene of this gene is found on chromosome 11.[provided by RefSeq, Jun 2012]
Function	Major acute phase protein. [UniProt]
Calculated Mw	14 kDa
PTM	This protein is the precursor of amyloid protein A, which is formed by the removal of approximately 24 residues from the C-terminal end. [UniProt]
Cellular Localization	Secreted. [UniProt]

## Images



ARG41454 anti-serum Amyloid A antibody IHC-P image

Immunohistochemistry: Paraffin-embedded Human liver cancer tissue stained with ARG41454 anti-serum Amyloid A antibody.



ARG41454 anti-serum Amyloid A antibody WB image

Western blot: Human plasma lysate stained with ARG41454 anti-serum Amyloid A antibody.