

## ARG41447 anti-FTCD / 58K Golgi protein antibody

Package: 100 µl  
Store at: -20°C

### Summary

Product Description	Rabbit Polyclonal antibody recognizes FTCD / 58K Golgi protein
Tested Reactivity	Hu
Tested Application	FACS, IHC-P, WB
Host	Rabbit
Clonality	Polyclonal
Isotype	IgG
Target Name	FTCD / 58K Golgi protein
Species	Human
Immunogen	Synthetic peptide of Human FTCD / 58K Golgi protein.
Conjugation	Un-conjugated
Alternate Names	EC 2.1.2.5; LCHC1; Formiminotetrahydrofolate cyclodeaminase; Formimidoyltransferase-cyclodeaminase; Formiminotransferase-cyclodeaminase; Glutamate formiminotransferase; Glutamate formyltransferase; FTCD; EC 4.3.1.4

### Application Instructions

Application table	Application	Dilution
	FACS	1:100
	IHC-P	1:50 - 1:200
	WB	1:500 - 1:2000
Application Note	* The dilutions indicate recommended starting dilutions and the optimal dilutions or concentrations should be determined by the scientist.	
Positive Control	Human fetal liver	
Observed Size	~ 58 kDa	

### Properties

Form	Liquid
Purification	Affinity purified.
Buffer	PBS (pH 7.4), 150 mM NaCl, 0.02% Sodium azide and 50% Glycerol.
Preservative	0.02% Sodium azide
Stabilizer	50% Glycerol
Storage instruction	For continuous use, store undiluted antibody at 2-8°C for up to a week. For long-term storage, aliquot and store at -20°C. Storage in frost free freezers is not recommended. Avoid repeated freeze/thaw cycles. Suggest spin the vial prior to opening. The antibody solution should be gently mixed before use.

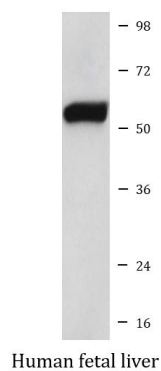
Note For laboratory research only, not for drug, diagnostic or other use.

## Bioinformation

---

Gene Symbol	FTCD
Gene Full Name	formimidoyltransferase cyclodeaminase
Background	The protein encoded by this gene is a bifunctional enzyme that channels 1-carbon units from formiminoglutamate, a metabolite of the histidine degradation pathway, to the folate pool. Mutations in this gene are associated with glutamate formiminotransferase deficiency. Alternatively spliced transcript variants have been found for this gene.[provided by RefSeq, Dec 2009]
Function	Folate-dependent enzyme, that displays both transferase and deaminase activity. Serves to channel one-carbon units from formiminoglutamate to the folate pool.  Binds and promotes bundling of vimentin filaments originating from the Golgi. [UniProt]
Calculated Mw	59 kDa
Cellular Localization	Cytoplasm, cytoskeleton, microtubule organizing center, centrosome, centriole. Golgi apparatus. Note=More abundantly located around the mother centriole. [UniProt]

## Images



ARG41447 anti-FTCD / 58K Golgi protein antibody WB image

Western blot: Human fetal liver lysate stained with ARG41447 anti-FTCD / 58K Golgi protein antibody.