

ARG41438
anti-Myoglobin antibodyPackage: 100 µl
Store at: -20°C

Summary

Product Description	Rabbit Polyclonal antibody recognizes Myoglobin
Tested Reactivity	Hu, Ms, Rat
Tested Application	ICC/IF, IHC-P, IP, WB
Host	Rabbit
Clonality	Polyclonal
Isotype	IgG
Target Name	Myoglobin
Species	Human
Immunogen	Synthetic peptide of Human Myoglobin.
Conjugation	Un-conjugated
Alternate Names	PVALB; myoglobin; Myoglobin

Application Instructions

Application table	Application	Dilution
	ICC/IF	1:50 - 1:200
	IHC-P	1:50 - 1:200
	IP	1:30
	WB	1:500 - 1:2000
Application Note	* The dilutions indicate recommended starting dilutions and the optimal dilutions or concentrations should be determined by the scientist.	
Positive Control	Human heart muscle	
Observed Size	~ 19 kDa	

Properties

Form	Liquid
Purification	Affinity purified.
Buffer	PBS (pH 7.4), 150 mM NaCl, 0.02% Sodium azide and 50% Glycerol.
Preservative	0.02% Sodium azide
Stabilizer	50% Glycerol
Storage instruction	For continuous use, store undiluted antibody at 2-8°C for up to a week. For long-term storage, aliquot and store at -20°C. Storage in frost free freezers is not recommended. Avoid repeated freeze/thaw cycles. Suggest spin the vial prior to opening. The antibody solution should be gently mixed before use.

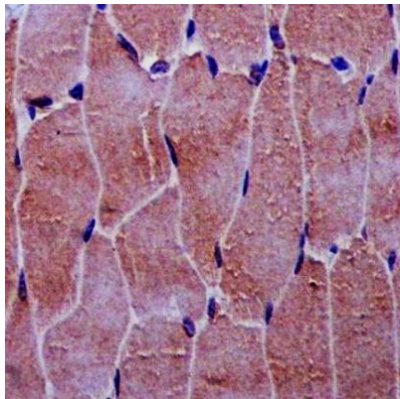
Note

For laboratory research only, not for drug, diagnostic or other use.

Bioinformation

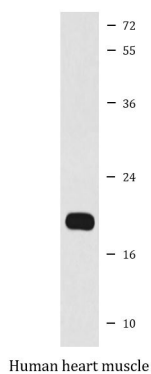
Gene Symbol	MB
Gene Full Name	myoglobin
Background	This gene encodes a member of the globin superfamily and is expressed in skeletal and cardiac muscles. The encoded protein is a haemoprotein contributing to intracellular oxygen storage and transcellular facilitated diffusion of oxygen. At least three alternatively spliced transcript variants encoding the same protein have been reported. [provided by RefSeq, Jul 2008]
Function	Serves as a reserve supply of oxygen and facilitates the movement of oxygen within muscles. [UniProt]
Calculated Mw	17 kDa

Images



ARG41438 anti-Myoglobin antibody IHC-P image

Immunohistochemistry: Paraffin-embedded Human skeletal muscle tissue stained with ARG41438 anti-Myoglobin antibody.



ARG41438 anti-Myoglobin antibody WB image

Western blot: Human heart muscle lysate stained with ARG41438 anti-Myoglobin antibody.