

## ARG41422 anti-CD18 / LFA1 beta antibody

Package: 50 µg  
Store at: -20°C

### Summary

Product Description	Rabbit Polyclonal antibody recognizes CD18 / LFA1 beta
Tested Reactivity	Hu
Tested Application	FACS, ICC/IF, IHC-P, WB
Host	Rabbit
Clonality	Polyclonal
Isotype	IgG
Target Name	CD18 / LFA1 beta
Species	Human
Immunogen	Recombinant protein corresponding to Q404-S769 of Human CD18.
Conjugation	Un-conjugated
Alternate Names	MF17; LAD; CD antigen CD18; MFI7; MAC-1; Cell surface adhesion glycoproteins LFA-1/CR3/p150,95 subunit beta; LCAMB; Integrin beta-2; Complement receptor C3 subunit beta; LFA-1; CD18

### Application Instructions

Application table	Application	Dilution
	FACS	1:150 - 1:500
	ICC/IF	1:200 - 1:1000
	IHC-P	1:200 - 1:1000
	WB	1:500 - 1:2000
Application Note	IHC-P: Antigen Retrieval: Heat mediation was performed in Citrate buffer (pH 6.0, epitope retrieval solution) for 20 min. * The dilutions indicate recommended starting dilutions and the optimal dilutions or concentrations should be determined by the scientist.	
Observed Size	~ 100 kDa	

### Properties

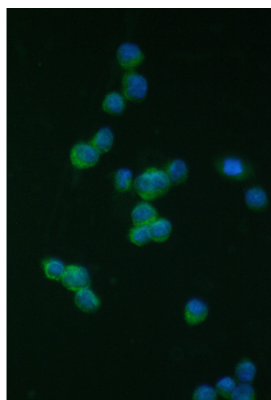
Form	Liquid
Purification	Affinity purification with immunogen.
Buffer	0.2% Na <sub>2</sub> HPO <sub>4</sub> , 0.9% NaCl, 0.05% Sodium azide and 5% BSA.
Preservative	0.05% Sodium azide
Stabilizer	5% BSA
Concentration	0.5 mg/ml

<b>Storage instruction</b>	For continuous use, store undiluted antibody at 2-8°C for up to a week. For long-term storage, aliquot and store at -20°C or below. Storage in frost free freezers is not recommended. Avoid repeated freeze/thaw cycles. Suggest spin the vial prior to opening. The antibody solution should be gently mixed before use.
<b>Note</b>	For laboratory research only, not for drug, diagnostic or other use.

## Bioinformation

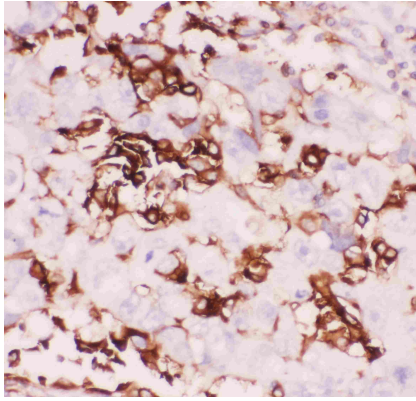
<b>Gene Symbol</b>	ITGB2
<b>Gene Full Name</b>	integrin, beta 2 (complement component 3 receptor 3 and 4 subunit)
<b>Background</b>	This gene encodes an integrin beta chain, which combines with multiple different alpha chains to form different integrin heterodimers. Integrins are integral cell-surface proteins that participate in cell adhesion as well as cell-surface mediated signalling. The encoded protein plays an important role in immune response and defects in this gene cause leukocyte adhesion deficiency. Alternative splicing results in multiple transcript variants. [provided by RefSeq, Dec 2014]
<b>Function</b>	Integrin alpha-L/beta-2 is a receptor for ICAM1, ICAM2, ICAM3 and ICAM4. Integrins alpha-M/beta-2 and alpha-X/beta-2 are receptors for the iC3b fragment of the third complement component and for fibrinogen. Integrin alpha-X/beta-2 recognizes the sequence G-P-R in fibrinogen alpha-chain. Integrin alpha-M/beta-2 recognizes P1 and P2 peptides of fibrinogen gamma chain. Integrin alpha-M/beta-2 is also a receptor for factor X. Integrin alpha-D/beta-2 is a receptor for ICAM3 and VCAM1. Triggers neutrophil transmigration during lung injury through PTK2B/PYK2-mediated activation. [UniProt]
<b>Calculated Mw</b>	85 kDa
<b>PTM</b>	Both Ser-745 and Ser-756 become phosphorylated when T-cells are exposed to phorbol esters (PubMed:11700305). Phosphorylation on Thr-758 (but not on Ser-756) allows interaction with 14-3-3 proteins (PubMed:11700305, PubMed:16301335). [UniProt]
<b>Cellular Localization</b>	Cell membrane; Single-pass type I membrane protein. Membrane raft; Single-pass type I membrane protein. [UniProt]

## Images



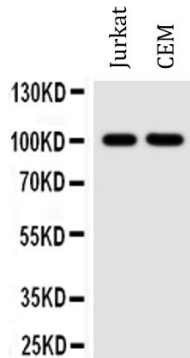
ARG41422 anti-CD18 / LFA1 beta antibody ICC/IF image

Immunofluorescence: THP-1 cells stained with ARG41422 anti-CD18 / LFA1 beta antibody (green) at 2 µg/ml dilution, overnight at 4°C. DAPI (blue) for nuclear staining.



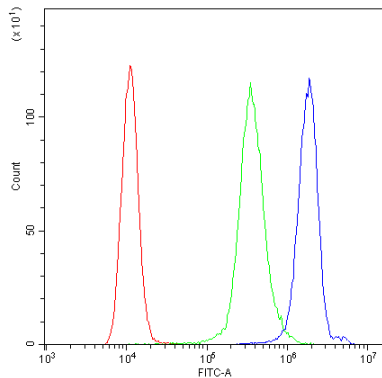
ARG41422 anti-CD18 / LFA1 beta antibody IHC-P image

Immunohistochemistry: Paraffin-embedded Human lung cancer tissue. Antigen Retrieval: Heat mediation was performed in Citrate buffer (pH 6.0, epitope retrieval solution) for 20 min. The tissue section was blocked with 10% goat serum. The tissue section was then stained with ARG41422 anti-CD18 / LFA1 beta antibody at 1  $\mu\text{g}/\text{ml}$  dilution, overnight at 4°C.



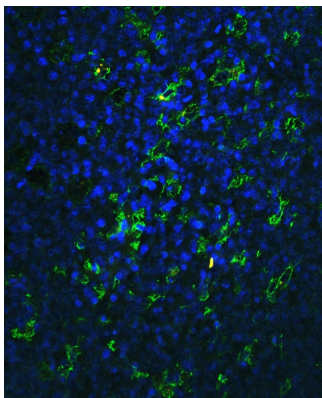
ARG41422 anti-CD18 / LFA1 beta antibody WB image

Western blot: 50  $\mu\text{g}$  of samples under reducing conditions. Jurkat and CEM whole cell lysates stained with ARG41422 anti-CD18 / LFA1 beta antibody at 0.5  $\mu\text{g}/\text{ml}$  dilution, overnight at 4°C.



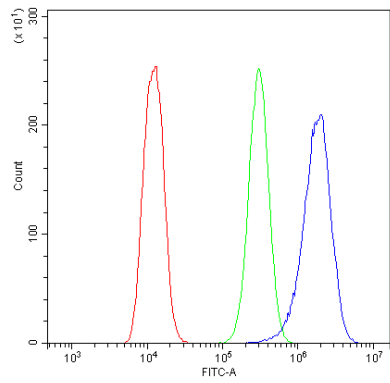
ARG41422 anti-CD18 / LFA1 beta antibody FACS image

Flow Cytometry: Raji cells were blocked with 10% normal goat serum and then stained with ARG41422 anti-CD18 / LFA1 beta antibody (blue) at 1  $\mu\text{g}/10^6$  cells for 30 min at 20°C, followed by incubation with DyLight®488 labelled secondary antibody. Isotype control antibody (green) was Rabbit IgG (1  $\mu\text{g}/10^6$  cells) used under the same conditions. Unlabelled sample (red) was also used as a control.



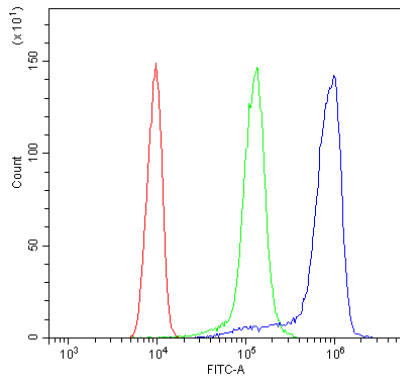
ARG41422 anti-CD18 / LFA1 beta antibody IHC-P image

Immunohistochemistry: Paraffin-embedded Human tonsil tissue. Antigen Retrieval: Heat mediation was performed in Citrate buffer (pH 6.0, epitope retrieval solution) for 20 min. The tissue section was blocked with 10% goat serum. The tissue section was then stained with ARG41422 anti-CD18 / LFA1 beta antibody at 1  $\mu\text{g}/\text{ml}$  dilution, overnight at 4°C.



#### ARG41422 anti-CD18 / LFA1 beta antibody FACS image

Flow Cytometry: U2OS cells were blocked with 10% normal goat serum and then stained with ARG41422 anti-CD18 / LFA1 beta antibody (blue) at  $1 \mu\text{g}/10^6$  cells for 30 min at  $20^\circ\text{C}$ , followed by incubation with DyLight<sup>®</sup>488 labelled secondary antibody. Isotype control antibody (green) was Rabbit IgG ( $1 \mu\text{g}/10^6$  cells) used under the same conditions. Unlabelled sample (red) was also used as a control.



#### ARG41422 anti-CD18 / LFA1 beta antibody FACS image

Flow Cytometry: THP-1 cells were blocked with 10% normal goat serum and then stained with ARG41422 anti-CD18 / LFA1 beta antibody (blue) at  $1 \mu\text{g}/10^6$  cells for 30 min at  $20^\circ\text{C}$ , followed by incubation with DyLight<sup>®</sup>488 labelled secondary antibody. Isotype control antibody (green) was Rabbit IgG ( $1 \mu\text{g}/10^6$  cells) used under the same conditions. Unlabelled sample (red) was also used as a control.