

ARG41411 anti-GABARAPL1 antibody

Package: 50 µl
Store at: -20°C

Summary

Product Description	Rabbit Polyclonal antibody recognizes GABARAPL1
Tested Reactivity	Hu
Predict Reactivity	Ms, Rat, Cow, Dog, Gpig, Hrs, Rb
Tested Application	IHC-P, WB
Host	Rabbit
Clonality	Polyclonal
Isotype	IgG
Target Name	GABARAPL1
Species	Human
Immunogen	Synthetic peptide around the N-terminal region of Human GABARAPL1. (within the following region: MKFQYKEDHPFEYRKKKEGKIRKKYPDRVPVIVEKAPKARVPDLDKRKYL)
Conjugation	Un-conjugated
Alternate Names	A; Gamma-aminobutyric acid receptor-associated protein-like 1; Glandular epithelial cell protein 1; GEC1; Early estrogen-regulated protein; APG8-LIKE; GEC-1; ATG8L; ATG8; APG8L; ATG8B; GABA

Application Instructions

Predict Reactivity Note	Predicted Homology Based On Immunogen Sequence: Cow: 100%; Dog: 100%; Guinea pig: 100%; Horse: 100%; Mouse: 100%; Rabbit: 100%; Rat: 100%						
Application table	<table><thead><tr><th>Application</th><th>Dilution</th></tr></thead><tbody><tr><td>IHC-P</td><td>5 µg/ml</td></tr><tr><td>WB</td><td>1 µg/ml</td></tr></tbody></table>	Application	Dilution	IHC-P	5 µg/ml	WB	1 µg/ml
Application	Dilution						
IHC-P	5 µg/ml						
WB	1 µg/ml						
Application Note	IHC-P: Antigen Retrieval: Heat mediation was performed. * The dilutions indicate recommended starting dilutions and the optimal dilutions or concentrations should be determined by the scientist.						
Positive Control	293T						
Observed Size	~ 14 kDa						

Properties

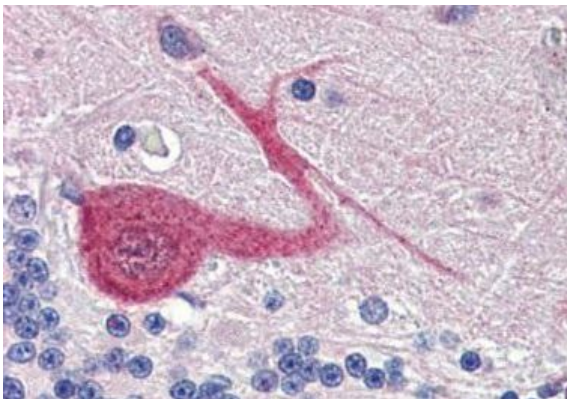
Form	Liquid
Purification	Affinity purified.
Buffer	PBS, 0.09% (w/v) Sodium azide and 2% Sucrose.
Preservative	0.09% (w/v) Sodium azide

Stabilizer	2% Sucrose
Concentration	Batch dependent within range: 0.5 - 1 mg/ml
Storage instruction	For continuous use, store undiluted antibody at 2-8°C for up to a week. For long-term storage, aliquot and store at -20°C or below. Storage in frost free freezers is not recommended. Avoid repeated freeze/thaw cycles. Suggest spin the vial prior to opening. The antibody solution should be gently mixed before use.
Note	For laboratory research only, not for drug, diagnostic or other use.

Bioinformation

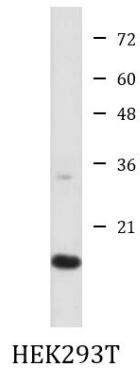
Gene Symbol	GABARAPL1
Gene Full Name	GABA(A) receptor-associated protein like 1
Function	Ubiquitin-like modifier that increases cell-surface expression of kappa-type opioid receptor through facilitating anterograde intracellular trafficking of the receptor. Involved in formation of autophagosomal vacuoles. Whereas LC3s are involved in elongation of the phagophore membrane, the GABARAP/GATE-16 subfamily is essential for a later stage in autophagosome maturation. [UniProt]
Calculated Mw	14 kDa
PTM	<p>The precursor molecule is cleaved by ATG4B to form the cytosolic form, GABARAPL1-I. This is activated by APG7L/ATG7, transferred to ATG3 and conjugated to phospholipid to form the membrane-bound form, GABARAPL1-II (By similarity). ATG4B also mediates the delipidation required for GABARAPL1 recycling when autophagosomes fuse with lysosomes (PubMed:20404487).</p> <p>The Legionella effector RavZ is a deconjugating enzyme that produces an ATG8 product that would be resistant to re-conjugation by the host machinery due to the cleavage of the reactive C-terminal glycine. [UniProt]</p>
Cellular Localization	Cytoplasm, cytoskeleton. Cytoplasmic vesicle membrane; Lipid-anchor. Endoplasmic reticulum. Golgi apparatus. Cytoplasmic vesicle, autophagosome. [UniProt]

Images



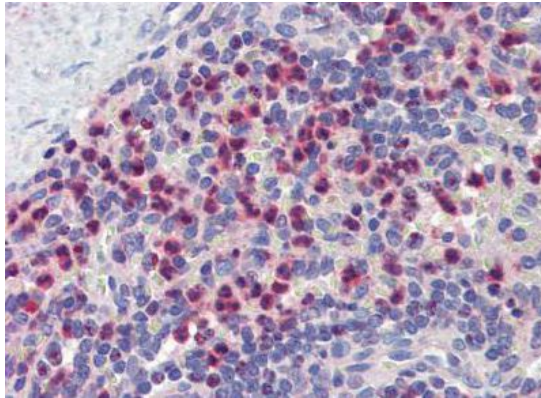
ARG41411 anti-GABARAPL1 antibody IHC-P image

Immunohistochemistry: Paraffin-embedded Human brain tissue stained with ARG41411 anti-GABARAPL1 antibody at 5 µg/ml dilution.



ARG41411 anti-GABARAPL1 antibody WB image

Western blot: HEK293T cell lysate stained with ARG41411 anti-GABARAPL1 antibody at 1 $\mu\text{g/ml}$ dilution.



ARG41411 anti-GABARAPL1 antibody IHC-P image

Immunohistochemistry: Formalin-fixed and paraffin-embedded Human spleen tissue. Antigen Retrieval: Heat mediation was performed. Tissue section was stained with ARG41411 anti-GABARAPL1 antibody at 5 $\mu\text{g/ml}$ dilution.