

ARG41387 anti-ApoL1 / Apolipoprotein L1 antibody

Package: 100 µl
Store at: -20°C

Summary

Product Description	Rabbit Polyclonal antibody recognizes ApoL1 / Apolipoprotein L1
Tested Reactivity	Hu
Tested Application	FACS, ICC/IF, IP, WB
Host	Rabbit
Clonality	Polyclonal
Isotype	IgG
Target Name	ApoL1 / Apolipoprotein L1
Species	Human
Immunogen	Synthetic peptide of Human ApoL1 / Apolipoprotein L1.
Conjugation	Un-conjugated
Alternate Names	APO-L; ApoL-I; APOL; FSGS4; Apolipoprotein L; Apolipoprotein L-I; Apolipoprotein L1; Apo-L; APOL-I; ApoL

Application Instructions

Application table	Application	Dilution
	FACS	1:20
	ICC/IF	1:20 - 1:50
	IP	1:20 - 1:50
	WB	1:1000 - 1:5000
Application Note	* The dilutions indicate recommended starting dilutions and the optimal dilutions or concentrations should be determined by the scientist.	
Observed Size	~ 40 kDa	

Properties

Form	Liquid
Purification	Affinity purified.
Buffer	50 mM Tris-Glycine (pH 7.4), 150 mM NaCl, 0.01% Sodium azide, 40% Glycerol and 0.05% BSA.
Preservative	0.01% Sodium azide
Stabilizer	40% Glycerol and 0.05% BSA
Concentration	Batch dependent
Storage instruction	For continuous use, store undiluted antibody at 2-8°C for up to a week. For long-term storage, aliquot and store at -20°C. Storage in frost free freezers is not recommended. Avoid repeated freeze/thaw

cycles. Suggest spin the vial prior to opening. The antibody solution should be gently mixed before use.

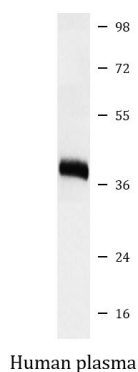
Note

For laboratory research only, not for drug, diagnostic or other use.

Bioinformation

Gene Symbol	APOL1
Gene Full Name	apolipoprotein L, 1
Background	This gene encodes a secreted high density lipoprotein which binds to apolipoprotein A-I. Apolipoprotein A-I is a relatively abundant plasma protein and is the major apoprotein of HDL. It is involved in the formation of most cholesteryl esters in plasma and also promotes efflux of cholesterol from cells. This apolipoprotein L family member may play a role in lipid exchange and transport throughout the body, as well as in reverse cholesterol transport from peripheral cells to the liver. Several different transcript variants encoding different isoforms have been found for this gene. [provided by RefSeq, Nov 2008]
Function	May play a role in lipid exchange and transport throughout the body. May participate in reverse cholesterol transport from peripheral cells to the liver. [UniProt]
Calculated Mw	44 kDa
PTM	Phosphorylated by FAM20C in the extracellular medium. [UniProt]
Cellular Localization	Secreted. [UniProt]

Images



ARG41387 anti-ApoL1 / Apolipoprotein L1 antibody WB image

Western blot: Human plasma cell lysate stained with ARG41387 anti-ApoL1 / Apolipoprotein L1 antibody.