

## ARG41350 anti-Syntenin 2 antibody

Package: 100 µl  
Store at: -20°C

### Summary

Product Description	Rabbit Polyclonal antibody recognizes Syntenin 2
Tested Reactivity	Hu
Tested Application	WB
Host	Rabbit
Clonality	Polyclonal
Isotype	IgG
Target Name	Syntenin 2
Species	Human
Immunogen	KLH-conjugated synthetic peptide between aa. 98-127 of Human Syntenin 2.
Conjugation	Un-conjugated
Alternate Names	ST-2; SITAC; Syndecan-binding protein 2; SITAC18; Syntenin-2

### Application Instructions

Application table	Application	Dilution
	WB	1:1000
Application Note	* The dilutions indicate recommended starting dilutions and the optimal dilutions or concentrations should be determined by the scientist.	
Positive Control	HL-60	
Observed Size	28 kDa	

### Properties

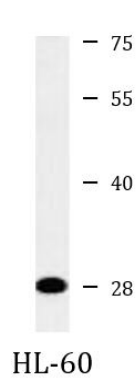
Form	Liquid
Purification	Purification with Protein A and immunogen peptide.
Buffer	PBS and 0.09% (W/V) Sodium azide.
Preservative	0.09% (W/V) Sodium azide
Storage instruction	For continuous use, store undiluted antibody at 2-8°C for up to a week. For long-term storage, aliquot and store at -20°C or below. Storage in frost free freezers is not recommended. Avoid repeated freeze/thaw cycles. Suggest spin the vial prior to opening. The antibody solution should be gently mixed before use.
Note	For laboratory research only, not for drug, diagnostic or other use.

### Bioinformation

Gene Symbol	SDCBP2
Gene Full Name	syndecan binding protein (syntenin) 2
Background	The protein encoded by this gene contains two class II PDZ domains. PDZ domains facilitate protein-protein interactions by binding to the cytoplasmic C-terminus of transmembrane proteins, and PDZ-containing proteins mediate cell signaling and the organization of protein complexes. The encoded protein binds to phosphatidylinositol 4, 5-bisphosphate (PIP2) and plays a role in nuclear PIP2 organization and cell division. Alternatively spliced transcript variants encoding multiple isoforms have been observed for this gene. Read-through transcription also exists between this gene and the upstream FKBP1A (FK506 binding protein 1A, 12kDa) gene, as represented in GenID:100528031. [provided by RefSeq, Sep 2011]
Calculated Mw	32 kDa
Cellular Localization	Cytoplasm. Nucleus, nucleolus, nucleoplasm. Cell membrane. Nucleus speckle. Note=Associates with intracellular membranes and enriched in the apical region of the cell and in intracellular compartments (PubMed:11102519). Colocalizes with TM4SF1 in the apical region of the cell (PubMed:11102519). Predominantly targeted to nuclear PIP2 pools. Shuttles between several subcellular compartments (PubMed:15961997). PIP2 plays an important role in the distribution of SDCBP2 (PubMed:23300061). [UniProt]

## Images

---



ARG41350 anti-Syntenin 2 antibody WB image

Western blot: 35 µg of HL-60 cell lysate stained with ARG41350 anti-Syntenin 2 antibody.