

ARG41343 anti-INPP4B antibody

Package: 100 µl
Store at: -20°C

Summary

Product Description	Rabbit Polyclonal antibody recognizes INPP4B
Tested Reactivity	Hu, Ms, Rat
Tested Application	WB
Host	Rabbit
Clonality	Polyclonal
Isotype	IgG
Target Name	INPP4B
Species	Human
Immunogen	Recombinant fusion protein corresponding to aa. 380-600 of Human INPP4B (NP_003857.2).
Conjugation	Un-conjugated
Alternate Names	Type II inositol 3,4-bisphosphate 4-phosphatase; Inositol polyphosphate 4-phosphatase type II; EC 3.1.3.66

Application Instructions

Application table	Application	Dilution
	WB	1:500 - 1:2000
Application Note	* The dilutions indicate recommended starting dilutions and the optimal dilutions or concentrations should be determined by the scientist.	
Positive Control	A375	
Observed Size	98 kDa	

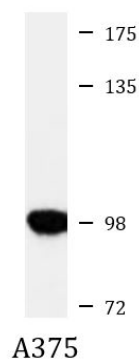
Properties

Form	Liquid
Purification	Affinity purified.
Buffer	PBS (pH 7.3), 0.02% Sodium azide and 50% Glycerol.
Preservative	0.02% Sodium azide
Stabilizer	50% Glycerol
Storage instruction	For continuous use, store undiluted antibody at 2-8°C for up to a week. For long-term storage, aliquot and store at -20°C. Storage in frost free freezers is not recommended. Avoid repeated freeze/thaw cycles. Suggest spin the vial prior to opening. The antibody solution should be gently mixed before use.
Note	For laboratory research only, not for drug, diagnostic or other use.

Bioinformation

Gene Symbol	INPP4B
Gene Full Name	inositol polyphosphate-4-phosphatase type II B
Background	INPP4B encodes the inositol polyphosphate 4-phosphatase type II, one of the enzymes involved in phosphatidylinositol signaling pathways. This enzyme removes the phosphate group at position 4 of the inositol ring from inositol 3,4-bisphosphate. There is limited data to suggest that the human type II enzyme is subject to alternative splicing, as has been established for the type I enzyme. [provided by RefSeq, Jul 2008]
Function	Catalyzes the hydrolysis of the 4-position phosphate of phosphatidylinositol 3,4-bisphosphate, inositol 1,3,4-trisphosphate and inositol 1,4-bisphosphate. [UniProt]
Calculated Mw	105 kDa

Images



ARG41343 anti-INPP4B antibody WB image

Western blot: 25 µg of A375 cell lysate stained with ARG41343 anti-INPP4B antibody at 1:1000 dilution.