

## ARG41342 anti-ARPC5L antibody

Package: 100 µl  
Store at: -20°C

### Summary

Product Description	Rabbit Polyclonal antibody recognizes ARPC5L
Tested Reactivity	Hu, Ms, Rat
Tested Application	IHC-P, WB
Host	Rabbit
Clonality	Polyclonal
Isotype	IgG
Target Name	ARPC5L
Species	Human
Immunogen	Recombinant fusion protein corresponding to aa. 1-100 of Human ARPC5L (NP_112240.1).
Conjugation	Un-conjugated
Alternate Names	Actin-related protein 2/3 complex subunit 5-like protein; Arp2/3 complex 16 kDa subunit 2; ARC16-2

### Application Instructions

Application table	Application	Dilution
	IHC-P	1:50 - 1:200
	WB	1:500 - 1:2000
Application Note	* The dilutions indicate recommended starting dilutions and the optimal dilutions or concentrations should be determined by the scientist.	
Positive Control	HeLa	
Observed Size	17 kDa	

### Properties

Form	Liquid
Purification	Affinity purified.
Buffer	PBS (pH 7.3), 0.02% Sodium azide and 50% Glycerol.
Preservative	0.02% Sodium azide
Stabilizer	50% Glycerol
Storage instruction	For continuous use, store undiluted antibody at 2-8°C for up to a week. For long-term storage, aliquot and store at -20°C. Storage in frost free freezers is not recommended. Avoid repeated freeze/thaw cycles. Suggest spin the vial prior to opening. The antibody solution should be gently mixed before use.
Note	For laboratory research only, not for drug, diagnostic or other use.

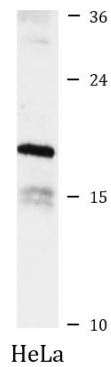
## Bioinformation

---

Gene Symbol	ARPC5L
Gene Full Name	actin related protein 2/3 complex, subunit 5-like
Function	May function as component of the Arp2/3 complex which is involved in regulation of actin polymerization and together with an activating nucleation-promoting factor (NPF) mediates the formation of branched actin networks. [UniProt]
Calculated Mw	17 kDa
Cellular Localization	Cytoplasm, cytoskeleton. [UniProt]

## Images

---



ARG41342 anti-ARPC5L antibody WB image

Western blot: 25 µg of HeLa cell lysate stained with ARG41342 anti-ARPC5L antibody at 1:1000 dilution.