

ARG41330 anti-MCOLN1 / TRPML1 antibody

Package: 50 µl
Store at: -20°C

Summary

Product Description	Rabbit Polyclonal antibody recognizes MCOLN1 / TRPML1
Tested Reactivity	Hu
Predict Reactivity	Ms, Rat, Cow, Dog, Gpig, Hrs, Pig, Rb
Tested Application	WB
Host	Rabbit
Clonality	Polyclonal
Isotype	IgG
Target Name	MCOLN1 / TRPML1
Species	Human
Immunogen	Synthetic peptide around the N-terminal region of Human MCOLN1 / TRPML1. (within the following region: FRHLFLLGYSDGADDTFAAYTREQLYQAIFHAVDQYLALPDVSLGRYAYV)
Conjugation	Un-conjugated
Alternate Names	ML4; MLIV; Mucolipidin; TRPM-L1; MG-2; TRP-ML1; Mucolipin-1; MST080; MSTP080; TRPML1

Application Instructions

Predict Reactivity Note	Predicted Homology Based On Immunogen Sequence: Cow: 93%; Dog: 100%; Guinea pig: 93%; Horse: 93%; Mouse: 93%; Pig: 100%; Rabbit: 100%; Rat: 93%				
Application table	<table><thead><tr><th>Application</th><th>Dilution</th></tr></thead><tbody><tr><td>WB</td><td>0.5 - 2 µg/ml</td></tr></tbody></table>	Application	Dilution	WB	0.5 - 2 µg/ml
Application	Dilution				
WB	0.5 - 2 µg/ml				
Application Note	* The dilutions indicate recommended starting dilutions and the optimal dilutions or concentrations should be determined by the scientist.				
Positive Control	Human fetal lung				
Observed Size	~ 65 kDa				

Properties

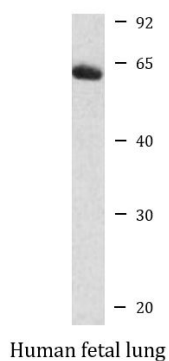
Form	Liquid
Purification	Affinity purified.
Buffer	PBS, 0.09% (w/v) Sodium azide and 2% Sucrose.
Preservative	0.09% (w/v) Sodium azide
Stabilizer	2% Sucrose
Concentration	Batch dependent: 0.5 - 1 mg/ml

Storage instruction	For continuous use, store undiluted antibody at 2-8°C for up to a week. For long-term storage, aliquot and store at -20°C or below. Storage in frost free freezers is not recommended. Avoid repeated freeze/thaw cycles. Suggest spin the vial prior to opening. The antibody solution should be gently mixed before use.
Note	For laboratory research only, not for drug, diagnostic or other use.

Bioinformation

Gene Symbol	MCOLN1
Gene Full Name	mucolipin 1
Background	This gene encodes a member of the transient receptor potential (TRP) cation channel gene family. The transmembrane protein localizes to intracellular vesicular membranes including lysosomes, and functions in the late endocytic pathway and in the regulation of lysosomal exocytosis. The channel is permeable to Ca(2+), Fe(2+), Na(+), K(+), and H(+), and is modulated by changes in Ca(2+) concentration. Mutations in this gene result in mucopolipidosis type IV. [provided by RefSeq, Oct 2009]
Function	Cation channel probably playing a role in the endocytic pathway and in the control of membrane trafficking of proteins and lipids. Could play a major role in Ca(2+) transport regulating lysosomal exocytosis. [UniProt]
Calculated Mw	65 kDa
Cellular Localization	Late endosome membrane; Lysosome membrane; Cytoplasmic vesicle membrane; Cell projection, phagocytic cup. Cytoplasmic vesicle, phagosome membrane; Cell membrane; Multi-pass membrane protein. [UniProt]

Images



ARG41330 anti-MCOLN1 / TRPML1 antibody WB image

Western blot: Human fetal lung lysate stained with ARG41330 anti-MCOLN1 / TRPML1 antibody at 1 µg/ml dilution.