

ARG41320
anti-CTHRC1 antibodyPackage: 100 µl
Store at: -20°C

Summary

Product Description	Rabbit Polyclonal antibody recognizes CTHRC1
Tested Reactivity	Hu
Tested Application	FACS, IHC-P, WB
Host	Rabbit
Clonality	Polyclonal
Isotype	IgG
Target Name	CTHRC1
Species	Human
Immunogen	KLH-conjugated synthetic peptide between aa. 19-46 of Human CTHRC1.
Conjugation	Un-conjugated
Alternate Names	Protein NMTC1; Collagen triple helix repeat-containing protein 1

Application Instructions

Application table	Application	Dilution
	FACS	1:10 - 1:50
	IHC-P	1:50 - 1:100
	WB	1:250 - 1:1000
Application Note	* The dilutions indicate recommended starting dilutions and the optimal dilutions or concentrations should be determined by the scientist.	
Positive Control	HeLa	
Observed Size	32 kDa	

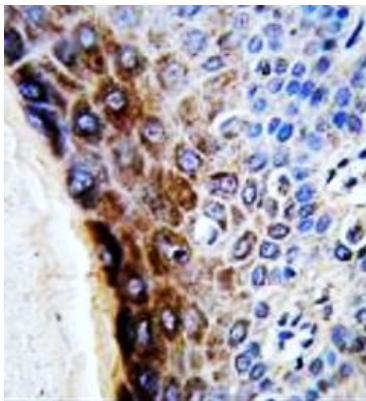
Properties

Form	Liquid
Purification	Purification with Protein A and immunogen peptide.
Buffer	PBS and 0.09% (W/V) Sodium azide.
Preservative	0.09% (W/V) Sodium azide
Storage instruction	For continuous use, store undiluted antibody at 2-8°C for up to a week. For long-term storage, aliquot and store at -20°C or below. Storage in frost free freezers is not recommended. Avoid repeated freeze/thaw cycles. Suggest spin the vial prior to opening. The antibody solution should be gently mixed before use.
Note	For laboratory research only, not for drug, diagnostic or other use.

Bioinformation

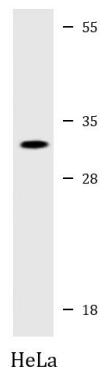
Gene Symbol	CTHRC1
Gene Full Name	collagen triple helix repeat containing 1
Background	This locus encodes a protein that may play a role in the cellular response to arterial injury through involvement in vascular remodeling. Mutations at this locus have been associated with Barrett esophagus and esophageal adenocarcinoma. Alternatively spliced transcript variants have been described. [provided by RefSeq, Jan 2012]
Function	May act as a negative regulator of collagen matrix deposition. [UniProt]
Calculated Mw	26 kDa
PTM	N-glycosylated. [UniProt]
Cellular Localization	Secreted, extracellular space, extracellular matrix. [UniProt]

Images



ARG41320 anti-CTHRC1 antibody IHC-P image

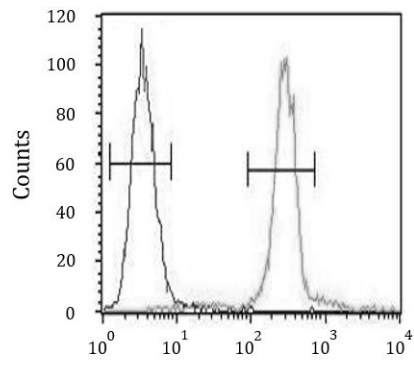
Immunohistochemistry: Formalin-fixed and paraffin-embedded Human skin tissue stained with ARG41320 anti-CTHRC1 antibody.



ARG41320 anti-CTHRC1 antibody WB image

Western blot: 20 µg of HeLa whole cell lysate stained with ARG41320 anti-CTHRC1 antibody at 1:500 dilution.

ARG41320 anti-CTHRC1 antibody FACS image



Flow Cytometry: A375 cells stained with ARG41320 anti-CTHRC1 antibody (right histogram) or without primary antibody as control (left histogram), followed by incubation with FITC labelled secondary antibody.