

## ARG41319 anti-Deptor antibody

Package: 50 µg  
Store at: -20°C

### Summary

Product Description	Rabbit Polyclonal antibody recognizes Deptor
Tested Reactivity	Ms
Tested Application	WB
Specificity	At least three isoforms of Deptor are known to exist. This antibody will detect all three isoforms.
Host	Rabbit
Clonality	Polyclonal
Isotype	IgG
Target Name	Deptor
Species	Human
Immunogen	A 16 amino acid peptide within aa. 220-270 of Human Deptor.
Conjugation	Un-conjugated
Alternate Names	DEP domain-containing mTOR-interacting protein; DEP domain-containing protein 6; DEPDC6; DEP.6

### Application Instructions

Application table	<table><thead><tr><th>Application</th><th>Dilution</th></tr></thead><tbody><tr><td>WB</td><td>1 - 2 µg/ml</td></tr></tbody></table>	Application	Dilution	WB	1 - 2 µg/ml
Application	Dilution				
WB	1 - 2 µg/ml				
Application Note	* The dilutions indicate recommended starting dilutions and the optimal dilutions or concentrations should be determined by the scientist.				
Positive Control	Mouse liver				
Observed Size	~ 46 kDa				

### Properties

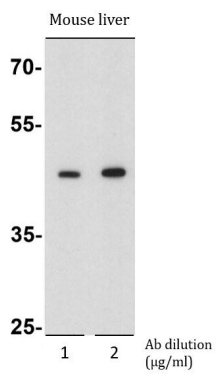
Form	Liquid
Purification	Affinity purification with immunogen.
Buffer	PBS and 0.02% Sodium azide.
Preservative	0.02% Sodium azide
Concentration	1 mg/ml
Storage instruction	For continuous use, store undiluted antibody at 2-8°C for up to a week. For long-term storage, aliquot and store at -20°C or below. Storage in frost free freezers is not recommended. Avoid repeated freeze/thaw cycles. Suggest spin the vial prior to opening. The antibody solution should be gently mixed before use.
Note	For laboratory research only, not for drug, diagnostic or other use.

## Bioinformation

---

Gene Symbol	DEPTOR
Gene Full Name	DEP domain containing MTOR-interacting protein
Function	Negative regulator of the mTORC1 and mTORC2 signaling pathways. Inhibits the kinase activity of both complexes. [UniProt]
Calculated Mw	46 kDa
PTM	Phosphorylated. Phosphorylation weakens interaction with MTOR within mTORC1 and mTORC2. [UniProt]

## Images



ARG41319 anti-Deptor antibody WB image

Western blot: Mouse liver lysate stained with ARG41319 anti-Deptor antibody at 1 and 2 µg/ml dilution.