

ARG41315 anti-SEC63 antibody

Package: 50 µl
Store at: -20°C

Summary

Product Description	Rabbit Polyclonal antibody recognizes SEC63
Tested Reactivity	Hu
Predict Reactivity	Ms, Rat, Cow, Dog, Gpig, Hrs, Rb, Zfsh
Tested Application	WB
Host	Rabbit
Clonality	Polyclonal
Isotype	IgG
Target Name	SEC63
Species	Human
Immunogen	Synthetic peptide around the C-terminal region of Human SEC63. (within the following region: WWLYIADRKEQTLISMPYHVCTLKDTEEVELKFPAPGKPGNYQYTVFLRS)
Conjugation	Un-conjugated
Alternate Names	DNAJC23; SEC63L; PRO2507; ERdj2; Translocation protein SEC63 homolog

Application Instructions

Predict Reactivity Note	Predicted Homology Based On Immunogen Sequence: Cow: 100%; Dog: 100%; Guinea pig: 100%; Horse: 100%; Mouse: 100%; Rabbit: 100%; Rat: 100%; Zebrafish: 85%				
Application table	<table><thead><tr><th>Application</th><th>Dilution</th></tr></thead><tbody><tr><td>WB</td><td>1 - 3 µg/ml</td></tr></tbody></table>	Application	Dilution	WB	1 - 3 µg/ml
Application	Dilution				
WB	1 - 3 µg/ml				
Application Note	* The dilutions indicate recommended starting dilutions and the optimal dilutions or concentrations should be determined by the scientist.				
Positive Control	HepG2				

Properties

Form	Liquid
Purification	Purification with Protein A.
Buffer	PBS, 0.09% (w/v) Sodium azide and 2% Sucrose.
Preservative	0.09% (w/v) Sodium azide
Stabilizer	2% Sucrose
Concentration	Batch dependent: 0.5 - 1 mg/ml
Storage instruction	For continuous use, store undiluted antibody at 2-8°C for up to a week. For long-term storage, aliquot and store at -20°C or below. Storage in frost free freezers is not recommended. Avoid repeated freeze/thaw cycles. Suggest spin the vial prior to opening. The antibody solution should be gently mixed

before use.

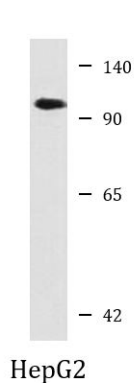
Note

For laboratory research only, not for drug, diagnostic or other use.

Bioinformation

Gene Symbol	SEC63
Gene Full Name	SEC63 homolog, protein translocation regulator
Background	The Sec61 complex is the central component of the protein translocation apparatus of the endoplasmic reticulum (ER) membrane. The protein encoded by this gene and SEC62 protein are found to be associated with ribosome-free SEC61 complex. It is speculated that Sec61-Sec62-Sec63 may perform post-translational protein translocation into the ER. The Sec61-Sec62-Sec63 complex might also perform the backward transport of ER proteins that are subject to the ubiquitin-proteasome-dependent degradation pathway. The encoded protein is an integral membrane protein located in the rough ER. [provided by RefSeq, Jul 2008]
Function	Required for integral membrane and secreted preprotein translocation across the endoplasmic reticulum membrane. [UniProt]
Calculated Mw	88 kDa
Cellular Localization	Endoplasmic reticulum membrane; Multi-pass membrane protein. [UniProt]

Images



ARG41315 anti-SEC63 antibody WB image

Western blot: HepG2 cell lysate stained with ARG41315 anti-SEC63 antibody at 1.25 µg/ml dilution.