

ARG41306 anti-CSRP3 antibody

Package: 50 µl
Store at: -20°C

Summary

Product Description	Rabbit Polyclonal antibody recognizes CSRP3
Tested Reactivity	Hu, Rat
Predict Reactivity	Ms, Cow, Dog, Gpig, Hrs, Rb
Tested Application	WB
Host	Rabbit
Clonality	Polyclonal
Isotype	IgG
Target Name	CSRP3
Species	Human
Immunogen	Synthetic peptide around the middle region of Human CSRP3. (within the following region: QGAGCLSTDTGEHLGLQFQQSPKPARSVTTSNPSKFTAKFGESEKPCRCG)
Conjugation	Un-conjugated
Alternate Names	CMH12; LIM domain protein, cardiac; Cysteine and glycine-rich protein 3; LMO4; Muscle LIM protein; MLP; CMD1M; CRP3; Cysteine-rich protein 3; Cardiac LIM protein; CLP

Application Instructions

Predict Reactivity Note	Predicted Homology Based On Immunogen Sequence: Cow: 100%; Dog: 100%; Guinea pig: 100%; Horse: 100%; Mouse: 100%; Rabbit: 100%				
Application table	<table><thead><tr><th>Application</th><th>Dilution</th></tr></thead><tbody><tr><td>WB</td><td>0.2 - 1 µg/ml</td></tr></tbody></table>	Application	Dilution	WB	0.2 - 1 µg/ml
Application	Dilution				
WB	0.2 - 1 µg/ml				
Application Note	* The dilutions indicate recommended starting dilutions and the optimal dilutions or concentrations should be determined by the scientist.				
Positive Control	Human heart				

Properties

Form	Liquid
Purification	Affinity purified.
Buffer	PBS, 0.09% (w/v) Sodium azide and 2% Sucrose.
Preservative	0.09% (w/v) Sodium azide
Stabilizer	2% Sucrose
Concentration	Batch dependent: 0.5 - 1 mg/ml
Storage instruction	For continuous use, store undiluted antibody at 2-8°C for up to a week. For long-term storage, aliquot and store at -20°C or below. Storage in frost free freezers is not recommended. Avoid repeated

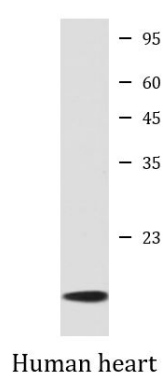
freeze/thaw cycles. Suggest spin the vial prior to opening. The antibody solution should be gently mixed before use.

Note For laboratory research only, not for drug, diagnostic or other use.

Bioinformation

Gene Symbol	CSRP3
Gene Full Name	cysteine and glycine-rich protein 3 (cardiac LIM protein)
Background	This gene encodes a member of the CSRP family of LIM domain proteins, which may be involved in regulatory processes important for development and cellular differentiation. The LIM/double zinc-finger motif found in this protein is found in a group of proteins with critical functions in gene regulation, cell growth, and somatic differentiation. Mutations in this gene are thought to cause heritable forms of hypertrophic cardiomyopathy (HCM) and dilated cardiomyopathy (DCM) in humans. Alternatively spliced transcript variants with different 5' UTR, but encoding the same protein, have been found for this gene. [provided by RefSeq, Jul 2008]
Function	Positive regulator of myogenesis. Plays a crucial and specific role in the organization of cytosolic structures in cardiomyocytes. Could play a role in mechanical stretch sensing. May be a scaffold protein that promotes the assembly of interacting proteins at Z-line structures. It is essential for calcineurin anchorage to the Z line. Required for stress-induced calcineurin-NFAT activation (By similarity). [UniProt]
Calculated Mw	21 kDa
PTM	Phosphorylated by PKC/PRKCA. [UniProt]
Cellular Localization	Nucleus. Cytoplasm. Cytoplasm, cytoskeleton. Cytoplasm, myofibril, sarcomere, Z line. Cytoplasm, myofibril, sarcomere. Note=Nucleocytoplasmic shuttling protein. Mainly cytoplasmic. In the Z line, found associated with GLRX3 (By similarity). Isoform 2: Cytoplasm, myofibril, sarcomere, Z line. [UniProt]

Images



ARG41306 anti-CSRP3 antibody WB image

Western blot: Human heart lysate stained with ARG41306 anti-CSRP3 antibody at 0.2-1 µg/ml dilution.