

## ARG41302 anti-RBBP6 antibody

Package: 50 µg  
Store at: -20°C

### Summary

Product Description	Rabbit Polyclonal antibody recognizes RBBP6
Tested Reactivity	Hu, Ms
Tested Application	ICC/IF, IHC-P, WB
Host	Rabbit
Clonality	Polyclonal
Isotype	IgG
Target Name	RBBP6
Species	Human
Immunogen	Recombinant protein corresponding to aa. 97-351 of Human RBBP6.
Conjugation	Un-conjugated
Alternate Names	PACT; Retinoblastoma-binding protein 6; E3 ubiquitin-protein ligase RBBP6; EC 6.3.2.-; SNAMA; Proliferation potential-related protein; RBQ-1; Protein P2P-R; Retinoblastoma-binding Q protein 1; MY038; P2P-R; p53-associated cellular protein of testis

### Application Instructions

Application table	Application	Dilution
	ICC/IF	1:100
	IHC-P	1:100
	WB	2 - 5 µg/ml
Application Note	* The dilutions indicate recommended starting dilutions and the optimal dilutions or concentrations should be determined by the scientist.	
Positive Control	Mouse brain	

### Properties

Form	Liquid
Purification	Purification with Protein G.
Buffer	0.01M PBS (pH 7.4), 0.03% Proclin 300 and 50% Glycerol.
Preservative	0.03% Proclin 300
Stabilizer	50% Glycerol
Storage instruction	For continuous use, store undiluted antibody at 2-8°C for up to a week. For long-term storage, aliquot and store at -20°C. Storage in frost free freezers is not recommended. Avoid repeated freeze/thaw cycles. Suggest spin the vial prior to opening. The antibody solution should be gently mixed before use.

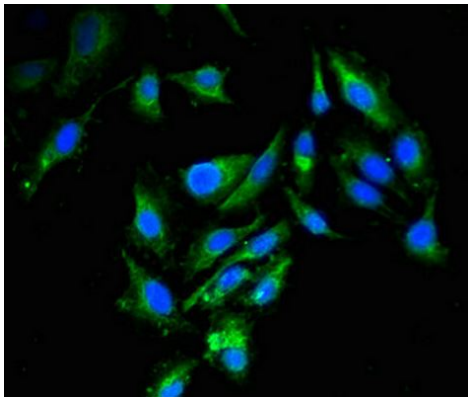
Note For laboratory research only, not for drug, diagnostic or other use.

## Bioinformation

---

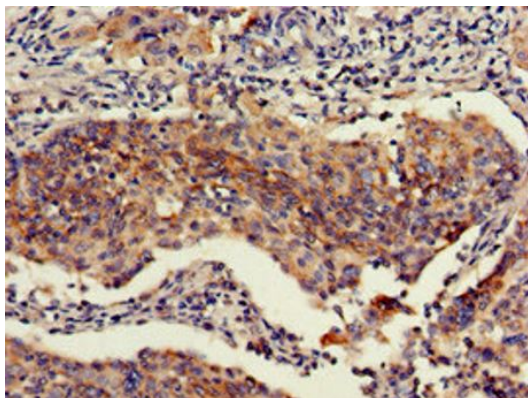
Gene Symbol	RBBP6
Gene Full Name	retinoblastoma binding protein 6
Background	The retinoblastoma tumor suppressor (pRB) protein binds with many other proteins. In various human cancers, pRB suppresses cellular proliferation and is inactivated. Cell cycle-dependent phosphorylation regulates the activity of pRB. This gene encodes a protein which binds to underphosphorylated but not phosphorylated pRB. Multiple alternatively spliced transcript variants that encode different isoforms have been found for this gene. [provided by RefSeq, Jul 2008]
Function	E3 ubiquitin-protein ligase which promotes ubiquitination of YBX1, leading to its degradation by the proteasome. May play a role as a scaffold protein to promote the assembly of the p53/TP53-MDM2 complex, resulting in increase of MDM2-mediated ubiquitination and degradation of p53/TP53; may function as negative regulator of p53/TP53, leading to both apoptosis and cell growth. [UniProt]
Calculated Mw	202 kDa
PTM	Phosphorylated by NEK6. [UniProt]
Cellular Localization	Nucleus, nucleolus. Chromosome. Cytoplasm, cytoskeleton, microtubule organizing center, centrosome. Note=Colocalizes with mitotic chromosomes. Colocalizes with NEK6 in the centrosome. [UniProt]

## Images



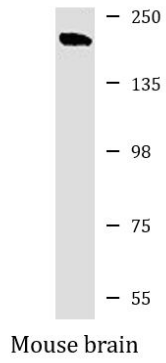
ARG41302 anti-RBBP6 antibody ICC/IF image

Immunofluorescence: HeLa cells stained with ARG41302 anti-RBBP6 antibody at 1:100 dilution.



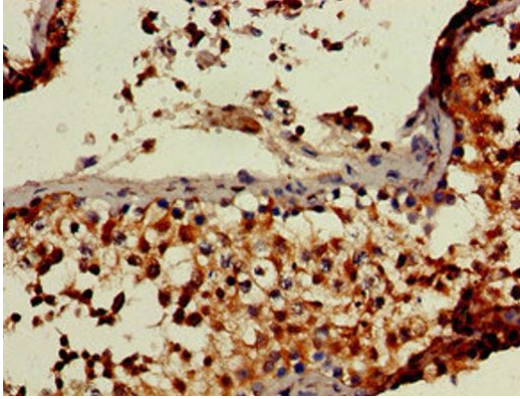
ARG41302 anti-RBBP6 antibody IHC-P image

Immunohistochemistry: Paraffin-embedded Human cervical cancer tissue stained with ARG41302 anti-RBBP6 antibody at 1:100 dilution.



#### ARG41302 anti-RBBP6 antibody WB image

Western blot: Mouse brain lysate stained with ARG41302 anti-RBBP6 antibody at 3  $\mu\text{g/ml}$  dilution.



#### ARG41302 anti-RBBP6 antibody IHC-P image

Immunohistochemistry: Paraffin-embedded Human testis tissue stained with ARG41302 anti-RBBP6 antibody at 1:100 dilution.