

## ARG41291 anti-ARL4A antibody

Package: 100 µl  
Store at: -20°C

### Summary

Product Description	Rabbit Polyclonal antibody recognizes ARL4A
Tested Reactivity	Hu, Ms, Rat
Tested Application	ICC/IF, IHC-P
Host	Rabbit
Clonality	Polyclonal
Isotype	IgG
Target Name	ARL4A
Species	Human
Immunogen	Recombinant fusion protein corresponding to aa. 121-200 of Human ARL4A (NP_001032241.1).
Conjugation	Un-conjugated
Alternate Names	ARL4; ADP-ribosylation factor-like protein 4A

### Application Instructions

Application table	Application	Dilution
	ICC/IF	1:50 - 1:200
	IHC-P	1:50 - 1:200
Application Note	* The dilutions indicate recommended starting dilutions and the optimal dilutions or concentrations should be determined by the scientist.	

### Properties

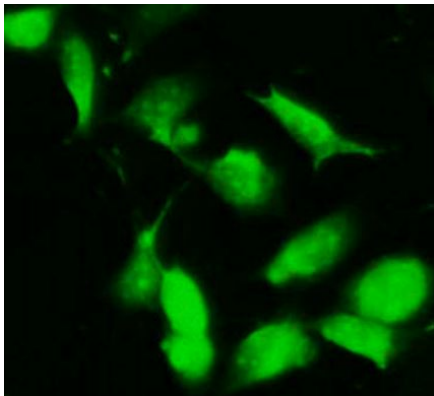
Form	Liquid
Purification	Affinity purified.
Buffer	PBS (pH 7.3), 0.02% Sodium azide and 50% Glycerol.
Preservative	0.02% Sodium azide
Stabilizer	50% Glycerol
Storage instruction	For continuous use, store undiluted antibody at 2-8°C for up to a week. For long-term storage, aliquot and store at -20°C. Storage in frost free freezers is not recommended. Avoid repeated freeze/thaw cycles. Suggest spin the vial prior to opening. The antibody solution should be gently mixed before use.
Note	For laboratory research only, not for drug, diagnostic or other use.

### Bioinformation

Gene Symbol	ARL4A
Gene Full Name	ADP-ribosylation factor-like 4A
Background	ADP-ribosylation factor-like 4A is a member of the ADP-ribosylation factor family of GTP-binding proteins. ARL4A is similar to ARL4C and ARL4D and each has a nuclear localization signal and an unusually high guanine nucleotide exchange rate. ARL4A is located in both the nuclear and extranuclear cell compartments. Multiple transcript variants encoding the same protein have been found for this gene. [provided by RefSeq, Jul 2008]
Function	Small GTP-binding protein which cycles between an inactive GDP-bound and an active GTP-bound form, and the rate of cycling is regulated by guanine nucleotide exchange factors (GEF) and GTPase-activating proteins (GAP). GTP-binding protein that does not act as an allosteric activator of the cholera toxin catalytic subunit. Recruits CYTH1, CYTH2, CYTH3 and CYTH4 to the plasma membrane in GDP-bound form. [UniProt]
Calculated Mw	23 kDa
PTM	Myristoylated. [UniProt]
Cellular Localization	Cell membrane. Cytoplasm. Nucleus, nucleolus. Note=Localization in the nucleolus is dependent by nucleotide binding. [UniProt]

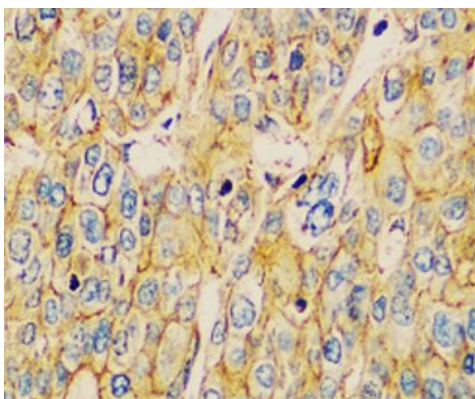
## Images

---



ARG41291 anti-ARL4A antibody ICC/IF image

Immunofluorescence: NIH/3T3 cells stained with ARG41291 anti-ARL4A antibody at 1:100 dilution.



ARG41291 anti-ARL4A antibody IHC-P image

Immunohistochemistry: Paraffin-embedded Human liver cancer tissue stained with ARG41291 anti-ARL4A antibody at 1:100 dilution.