

ARG41286 anti-SOGA1 antibody

Package: 100 µl

Store at: -20°C

Summary

Product Description	Rabbit Polyclonal antibody recognizes SOGA1
Tested Reactivity	Hu, Ms, Rat
Tested Application	WB
Host	Rabbit
Clonality	Polyclonal
Isotype	IgG
Target Name	SOGA1
Species	Human
Immunogen	Recombinant fusion protein corresponding to aa. 650-750 of Human SOGA1 (NP_542194.2).
Conjugation	Un-conjugated
Alternate Names	Suppressor of glucose by autophagy; 80-kDa SOGA fragment; Suppressor of glucose, autophagy-associated protein 1; SOGA; C20orf117; KIAA0889; SOGA family member 1; Protein SOGA1

Application Instructions

Application table	Application	Dilution
	WB	1:500 - 1:2000
Application Note	* The dilutions indicate recommended starting dilutions and the optimal dilutions or concentrations should be determined by the scientist.	
Positive Control	Mouse lung	
Observed Size	~ 95 kDa	

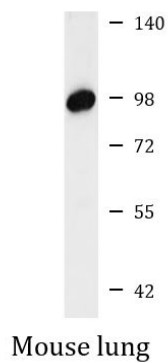
Properties

Form	Liquid
Purification	Affinity purified.
Buffer	PBS (pH 7.3), 0.02% Sodium azide and 50% Glycerol.
Preservative	0.02% Sodium azide
Stabilizer	50% Glycerol
Storage instruction	For continuous use, store undiluted antibody at 2-8°C for up to a week. For long-term storage, aliquot and store at -20°C. Storage in frost free freezers is not recommended. Avoid repeated freeze/thaw cycles. Suggest spin the vial prior to opening. The antibody solution should be gently mixed before use.
Note	For laboratory research only, not for drug, diagnostic or other use.

Bioinformation

Gene Symbol	SOGA1
Gene Full Name	suppressor of glucose, autophagy associated 1
Function	Regulates autophagy by playing a role in the reduction of glucose production in an adiponectin- and insulin-dependent manner. [UniProt]
Calculated Mw	160 kDa
PTM	Proteolytically cleaved in primary hepatocytes into a C-terminal 80 kDa form (By similarity). Proteolytically cleaved into a C-terminal SOGA 25 kDa form that is detected in plasma. [UniProt]
Cellular Localization	C-terminal 80 kDa form: Secreted. Note=Secreted in primary hepatocyte-conditioned media. [UniProt]

Images



ARG41286 anti-SOGA1 antibody WB image

Western blot: 25 ug of Mouse lung lysate stained with ARG41286 anti-SOGA1 antibody at 1:1000 dilution.