

ARG41284 anti-RASGRF1 / CDC25 antibody

Package: 100 µl
Store at: -20°C

Summary

Product Description	Rabbit Polyclonal antibody recognizes RASGRF1 / CDC25
Tested Reactivity	Ms
Tested Application	WB
Host	Rabbit
Clonality	Polyclonal
Isotype	IgG
Target Name	RASGRF1 / CDC25
Species	Human
Immunogen	Recombinant fusion protein corresponding to aa. 1-190 of Human RASGRF1 / CDC25 (NP_001139120.1).
Conjugation	Un-conjugated
Alternate Names	CDC25L; Ras-specific guanine nucleotide-releasing factor 1; CDC25; GRF1; PP13187; GRF55; H-GRF55; Ras-specific nucleotide exchange factor CDC25; Guanine nucleotide-releasing protein; Ras-GRF1; GNRP; ras-GRF1

Application Instructions

Application table	Application	Dilution
	WB	1:500 - 1:2000
Application Note	* The dilutions indicate recommended starting dilutions and the optimal dilutions or concentrations should be determined by the scientist.	
Positive Control	Mouse brain	
Observed Size	145 kDa	

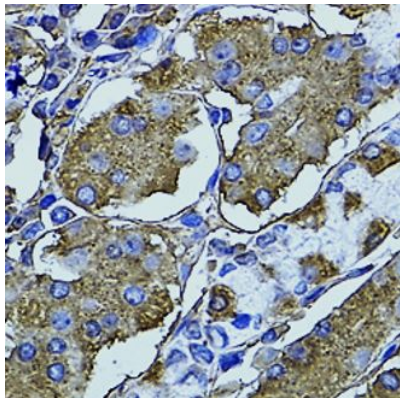
Properties

Form	Liquid
Purification	Affinity purified.
Buffer	PBS (pH 7.3), 0.02% Sodium azide and 50% Glycerol.
Preservative	0.02% Sodium azide
Stabilizer	50% Glycerol
Storage instruction	For continuous use, store undiluted antibody at 2-8°C for up to a week. For long-term storage, aliquot and store at -20°C. Storage in frost free freezers is not recommended. Avoid repeated freeze/thaw cycles. Suggest spin the vial prior to opening. The antibody solution should be gently mixed before use.
Note	For laboratory research only, not for drug, diagnostic or other use.

Bioinformation

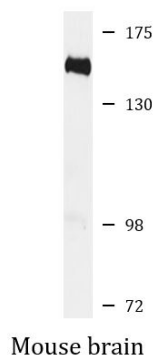
Gene Symbol	RASGRF1
Gene Full Name	Ras protein-specific guanine nucleotide-releasing factor 1
Background	The protein encoded by this gene is a guanine nucleotide exchange factor (GEF) similar to the <i>Saccharomyces cerevisiae</i> CDC25 gene product. Functional analysis has demonstrated that this protein stimulates the dissociation of GDP from RAS protein. The studies of the similar gene in mouse suggested that the Ras-GEF activity of this protein in brain can be activated by Ca ²⁺ influx, muscarinic receptors, and G protein beta-gamma subunit. Mouse studies also indicated that the Ras-GEF signaling pathway mediated by this protein may be important for long-term memory. Alternatively spliced transcript variants encoding distinct isoforms have been reported. [provided by RefSeq, Mar 2009]
Function	Promotes the exchange of Ras-bound GDP by GTP. [UniProt]
Calculated Mw	145 kDa
PTM	Phosphorylated by PLK2, leading to ubiquitination and degradation by the proteasome. Ubiquitinated and degraded following phosphorylation by PLK2. Phosphorylated by SRC and LCK. Phosphorylation by LCK increases its capacity to stimulate the GDP/GTP exchange on Ras, whereas its phosphorylation by SRC seems not to have an effect on stimulation activity. [UniProt]

Images



ARG41284 anti-RASGRF1 / CDC25 antibody IHC-P image

Immunohistochemistry: Paraffin-embedded Human stomach tissue stained with ARG41284 anti-RASGRF1 / CDC25 antibody at 1:100 dilution.



ARG41284 anti-RASGRF1 / CDC25 antibody WB image

Western blot: 25 ug of Mouse brain lysate stained with ARG41284 anti-RASGRF1 / CDC25 antibody at 1:1000 dilution.