

ARG41274 anti-ERVFRD 1 / Syncytin 2 antibody

Package: 50 µl
Store at: -20°C

Summary

Product Description	Rabbit Polyclonal antibody recognizes ERVFRD 1 / Syncytin 2
Tested Reactivity	Hu
Tested Application	IHC-P, WB
Host	Rabbit
Clonality	Polyclonal
Isotype	IgG
Target Name	ERVFRD 1 / Syncytin 2
Species	Human
Immunogen	Recombinant protein corresponding to aa. 16-250 of Human Syncytin 2.
Conjugation	Un-conjugated
Alternate Names	Syncytin-2; HERV-FRD; envFRD; ERVFRDE1; HERV-W/FRD; GLL6191; Endogenous retrovirus group FRD member 1; TM; SU; Envelope polyprotein; UNQ6191; HERV-FRD_6p24.1 provirus ancestral Env polyprotein

Application Instructions

Application table	Application	Dilution
	IHC-P	1:100
	WB	3 - 5 µg/ml
Application Note	* The dilutions indicate recommended starting dilutions and the optimal dilutions or concentrations should be determined by the scientist.	
Observed Size	60-70 kDa	

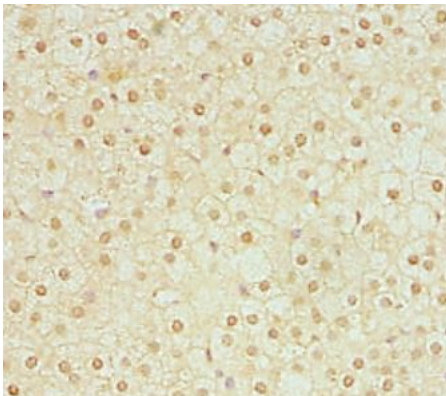
Properties

Form	Liquid
Purification	Affinity purification with immunogen.
Buffer	PBS (pH 7.3), 0.02% Sodium azide and 50% Glycerol.
Preservative	0.02% Sodium azide
Stabilizer	50% Glycerol
Storage instruction	For continuous use, store undiluted antibody at 2-8°C for up to a week. For long-term storage, aliquot and store at -20°C. Storage in frost free freezers is not recommended. Avoid repeated freeze/thaw cycles. Suggest spin the vial prior to opening. The antibody solution should be gently mixed before use.
Note	For laboratory research only, not for drug, diagnostic or other use.

Bioinformation

Gene Symbol	ERVFRD-1
Gene Full Name	endogenous retrovirus group FRD, member 1
Background	Many different human endogenous retrovirus (HERV) families are expressed in normal placental tissue at high levels, suggesting that HERVs are functionally important in reproduction. This gene is part of a human endogenous retrovirus provirus on chromosome 6 that has inactivating mutations in the gag and pol genes. This gene is the envelope glycoprotein gene which appears to have been selectively preserved. The gene's protein product plays a major role in placental development and trophoblast fusion. The protein has the characteristics of a typical retroviral envelope protein, including a cleavage site that separates the surface (SU) and transmembrane (TM) proteins which form a heterodimer. [provided by RefSeq, Jun 2012]
Function	<p>This endogenous retroviral envelope protein has retained its original fusogenic properties and participates in trophoblast fusion and the formation of a syncytium during placenta morphogenesis. The interaction with MFSD2A is apparently important for this process.</p> <p>Endogenous envelope proteins may have kept, lost or modified their original function during evolution but this one can still make pseudotypes with MLV, HIV-1 or SIV-1 virions and confer infectivity. Retroviral envelope proteins mediate receptor recognition and membrane fusion during early infection. The surface protein mediates receptor recognition, while the transmembrane protein anchors the envelope heterodimer to the viral membrane through one transmembrane domain. The other hydrophobic domain, called fusion peptide, mediates fusion of the viral membrane with the target cell membrane. [UniProt]</p>
Calculated Mw	60 kDa
PTM	<p>Specific enzymatic cleavages in vivo yield the mature SU and TM proteins.</p> <p>The CXXC motif is highly conserved across a broad range of retroviral envelope proteins. It is thought to participate in the formation of a labile disulfide bond possibly with the CX6CC motif present in the transmembrane protein. Isomerization of the intersubunit disulfide bond to an SU intrachain disulfide bond is thought to occur upon receptor recognition in order to allow membrane fusion (By similarity). [UniProt]</p>
Cellular Localization	Virion. Surface protein: Cell membrane; Peripheral membrane protein. Note=The surface protein is not anchored to the membrane, but localizes to the extracellular surface through its binding to TM. Transmembrane protein: Cell membrane; Single-pass membrane protein. [UniProt]

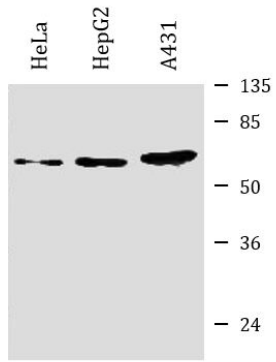
Images



ARG41274 anti-ERVFRD 1 / Syncytin 2 antibody IHC-P image

Immunohistochemistry: Paraffin-embedded Human adrenal gland tissue stained with ARG41274 anti-ERVFRD 1 / Syncytin 2 antibody at 1:100 dilution.

ARG41274 anti-ERVFRD 1 / Syncytin 2 antibody WB image



Western blot: HeLa, HepG2 and A431 whole cell lysates stained with ARG41274 anti-ERVFRD 1 / Syncytin 2 antibody at 4 μ g/ml dilution.