

ARG41260 anti-Syntaxin 8 antibody

Package: 50 µl
Store at: -20°C

Summary

Product Description	Rabbit Polyclonal antibody recognizes Syntaxin 8
Tested Reactivity	Ms
Predict Reactivity	Hu, Rat, Cow, Dog, Gpig
Tested Application	WB
Host	Rabbit
Clonality	Polyclonal
Isotype	IgG
Target Name	Syntaxin 8
Species	Mouse
Immunogen	Synthetic peptide around the C-terminal region of Mouse Syntaxin 8. (within the following region: IISRQKQMGQEIGNELDEQNEIDDLNLVENTDEKLRTARRVTLVDRK)
Conjugation	Un-conjugated
Alternate Names	CARB; Syntaxin-8

Application Instructions

Predict Reactivity Note	Predicted Homology Based On Immunogen Sequence: Cow: 93%; Dog: 86%; Guinea pig: 93%; Human: 100%; Rat: 86%				
Application table	<table><thead><tr><th>Application</th><th>Dilution</th></tr></thead><tbody><tr><td>WB</td><td>1 µg/ml</td></tr></tbody></table>	Application	Dilution	WB	1 µg/ml
Application	Dilution				
WB	1 µg/ml				
Application Note	* The dilutions indicate recommended starting dilutions and the optimal dilutions or concentrations should be determined by the scientist.				
Observed Size	30 kDa				

Properties

Form	Liquid
Purification	Affinity purified.
Buffer	PBS, 0.09% (w/v) Sodium azide and 2% Sucrose.
Preservative	0.09% (w/v) Sodium azide
Stabilizer	2% Sucrose
Concentration	Batch dependent: 0.5 - 1 mg/ml
Storage instruction	For continuous use, store undiluted antibody at 2-8°C for up to a week. For long-term storage, aliquot and store at -20°C or below. Storage in frost free freezers is not recommended. Avoid repeated freeze/thaw cycles. Suggest spin the vial prior to opening. The antibody solution should be gently mixed

before use.

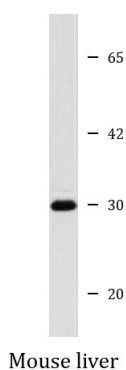
Note

For laboratory research only, not for drug, diagnostic or other use.

Bioinformation

Gene Symbol	STX8
Gene Full Name	syntaxin 8
Background	The gene is a member of the syntaxin family. The encoded protein is involved in protein trafficking from early to late endosomes via vesicle fusion and exocytosis. A related pseudogene has been identified on chromosome 12. Alternative splicing results in multiple transcript variants. [provided by RefSeq, May 2010]
Function	Vesicle trafficking protein that functions in the early secretory pathway, possibly by mediating retrograde transport from cis-Golgi membranes to the ER. [UniProt]
Calculated Mw	27 kDa
PTM	Ubiquitinated by HECTD3. [UniProt]
Cellular Localization	Membrane; Single-pass type IV membrane protein. Note=Preferentially associated with the early endosome. To a lesser extent, also present in late endosome, the plasma membrane and coated pits (By similarity). [UniProt]

Images



ARG41260 anti-Syntaxin 8 antibody WB image

Western blot: Mouse liver lysate stained with ARG41260 anti-Syntaxin 8 antibody at 1 µg/ml dilution.