

## ARG41257 anti-KIF3B antibody

Package: 50 µl  
Store at: -20°C

### Summary

Product Description	Rabbit Polyclonal antibody recognizes KIF3B
Tested Reactivity	Hu
Tested Application	WB
Host	Rabbit
Clonality	Polyclonal
Isotype	IgG
Target Name	KIF3B
Species	Human
Immunogen	Synthetic peptide around the C-terminal region of Human KIF3B. (within the following region: SGGGEEEEEEGEEGEEEGDDKDDYWREQQEKLEIEKRAIVEDHSLVAEE)
Conjugation	Un-conjugated
Alternate Names	Microtubule plus end-directed kinesin motor 3B; HH0048; KLP-11; FLA8; Kinesin-like protein KIF3B

### Application Instructions

Application table	<table><thead><tr><th>Application</th><th>Dilution</th></tr></thead><tbody><tr><td>WB</td><td>1 µg/ml</td></tr></tbody></table>	Application	Dilution	WB	1 µg/ml
Application	Dilution				
WB	1 µg/ml				
Application Note	* The dilutions indicate recommended starting dilutions and the optimal dilutions or concentrations should be determined by the scientist.				
Observed Size	85 kDa				

### Properties

Form	Liquid
Purification	Affinity purification with immunogen.
Buffer	PBS, 0.09% (w/v) Sodium azide and 2% Sucrose.
Preservative	0.09% (w/v) Sodium azide
Stabilizer	2% Sucrose
Concentration	Batch dependent: 0.5 - 1 mg/ml
Storage instruction	For continuous use, store undiluted antibody at 2-8°C for up to a week. For long-term storage, aliquot and store at -20°C or below. Storage in frost free freezers is not recommended. Avoid repeated freeze/thaw cycles. Suggest spin the vial prior to opening. The antibody solution should be gently mixed before use.
Note	For laboratory research only, not for drug, diagnostic or other use.

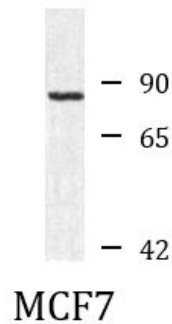
## Bioinformation

---

Gene Symbol	KIF3B
Gene Full Name	kinesin family member 3B
Background	The protein encoded by this gene acts as a heterodimer with kinesin family member 3A to aid in chromosome movement during mitosis and meiosis. The encoded protein is a plus end-directed microtubule motor and can interact with the SMC3 subunit of the cohesin complex. In addition, the encoded protein may be involved in the intracellular movement of membranous organelles. This protein and kinesin family member 3A form the kinesin II subfamily of the kinesin superfamily. [provided by RefSeq, Jul 2008]
Function	Involved in tethering the chromosomes to the spindle pole and in chromosome movement. Microtubule-based anterograde translocator for membranous organelles. Plus end-directed microtubule sliding activity in vitro (By similarity). [UniProt]
Calculated Mw	85 kDa
Cellular Localization	Cytoplasm, cytoskeleton. Cell projection, cilium. [UniProt]

## Images

---



ARG41257 anti-KIF3B antibody WB image

Western blot: MCF7 whole cell lysate stained with ARG41257 anti-KIF3B antibody at 1 µg/ml dilution.