

## ARG41242 anti-RAB4 antibody

Package: 100 µl  
Store at: -20°C

### Summary

Product Description	Rabbit Polyclonal antibody recognizes RAB4
Tested Reactivity	Hu, Ms, Rat
Tested Application	ICC/IF, IP, WB
Host	Rabbit
Clonality	Polyclonal
Isotype	IgG
Target Name	RAB4
Species	Human
Immunogen	Synthetic peptide derived from Human RAB4.
Conjugation	Un-conjugated
Alternate Names	Ras-related protein Rab-4A; HRES1; RAB4; HRES-1; HRES-1/RAB4

### Application Instructions

Application table	Application	Dilution
	ICC/IF	1:50 - 1:200
	IP	1:50
	WB	1:1000 - 1:2000
Application Note	* The dilutions indicate recommended starting dilutions and the optimal dilutions or concentrations should be determined by the scientist.	
Observed Size	25 kDa	

### Properties

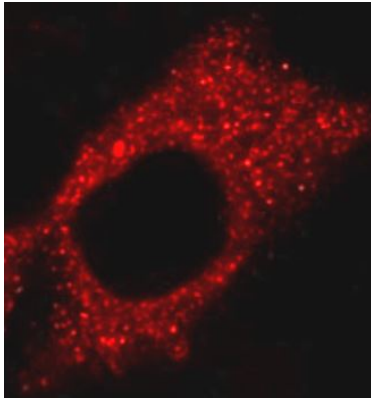
Form	Liquid
Purification	Affinity purified
Buffer	PBS (pH 7.4), 150 mM NaCl, 0.02% Sodium azide and 50% Glycerol.
Preservative	0.02% Sodium azide
Stabilizer	50% Glycerol
Storage instruction	For continuous use, store undiluted antibody at 2-8°C for up to a week. For long-term storage, aliquot and store at -20°C. Storage in frost free freezers is not recommended. Avoid repeated freeze/thaw cycles. Suggest spin the vial prior to opening. The antibody solution should be gently mixed before use.
Note	For laboratory research only, not for drug, diagnostic or other use.

## Bioinformation

---

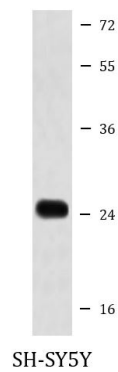
Gene Symbol	RAB4A
Gene Full Name	RAB4A, member RAS oncogene family
Background	This gene is a member of the largest group in the Ras superfamily of small GTPases, which regulate membrane trafficking. The encoded protein is associated with early endosomes and is involved in their sorting and recycling. The protein also plays a role in regulating the recycling of receptors from endosomes to the plasma membrane. Alternatively spliced transcript variants have been observed for this gene. [provided by RefSeq, Dec 2012]
Function	Protein transport. Probably involved in vesicular traffic (By similarity). [UniProt]
Calculated Mw	24 kDa
PTM	Phosphorylated by CDK1 kinase during mitosis. [UniProt]
Cellular Localization	Membrane; Peripheral membrane protein. Cytoplasm. Early endosome membrane; Peripheral membrane protein. Recycling endosome membrane; Peripheral membrane protein. Note=Generally associated with membranes. Cytoplasmic when phosphorylated by CDK1. [UniProt]

## Images



ARG41242 anti-RAB4 antibody ICC/IF image

Immunofluorescence: HeLa cells stained with ARG41242 anti-RAB4 antibody.



ARG41242 anti-RAB4 antibody WB image

Western blot: SH-SY5Y cell lysate stained with ARG41242 anti-RAB4 antibody.