

ARG41241 anti-KIF23 / MKLP1 antibody

Package: 100 µl
Store at: -20°C

Summary

Product Description	Rabbit Polyclonal antibody recognizes KIF23 / MKLP1
Tested Reactivity	Hu, Ms, Rat
Tested Application	ICC/IF, WB
Host	Rabbit
Clonality	Polyclonal
Isotype	IgG
Target Name	KIF23 / MKLP1
Species	Human
Immunogen	Synthetic peptide derived from Human KIF23 / MKLP1.
Conjugation	Un-conjugated
Alternate Names	MKLP-1; MKLP1; Mitotic kinesin-like protein 1; CHO1; KNSL5; Kinesin-like protein 5; Kinesin-like protein KIF23

Application Instructions

Application table	Application	Dilution
	ICC/IF	1:50 - 1:200
	WB	1:500 - 1:2000
Application Note	* The dilutions indicate recommended starting dilutions and the optimal dilutions or concentrations should be determined by the scientist.	
Observed Size	110 kDa; 98 kDa	

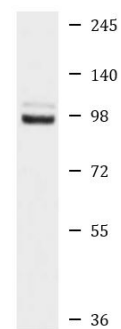
Properties

Form	Liquid
Purification	Affinity purified
Buffer	PBS (pH 7.4), 150 mM NaCl, 0.02% Sodium azide and 50% Glycerol.
Preservative	0.02% Sodium azide
Stabilizer	50% Glycerol
Storage instruction	For continuous use, store undiluted antibody at 2-8°C for up to a week. For long-term storage, aliquot and store at -20°C. Storage in frost free freezers is not recommended. Avoid repeated freeze/thaw cycles. Suggest spin the vial prior to opening. The antibody solution should be gently mixed before use.
Note	For laboratory research only, not for drug, diagnostic or other use.

Bioinformation

Gene Symbol	KIF23
Gene Full Name	kinesin family member 23
Background	The protein encoded by this gene is a member of kinesin-like protein family. This family includes microtubule-dependent molecular motors that transport organelles within cells and move chromosomes during cell division. This protein has been shown to cross-bridge antiparallel microtubules and drive microtubule movement in vitro. Alternate splicing of this gene results in multiple transcript variants. [provided by RefSeq, Jul 2013]
Function	Component of the centralspindlin complex that serves as a microtubule-dependent and Rho-mediated signaling required for the myosin contractile ring formation during the cell cycle cytokinesis. Essential for cytokinesis in Rho-mediated signaling. Required for the localization of ECT2 to the central spindle. Plus-end-directed motor enzyme that moves antiparallel microtubules in vitro. [UniProt]
Calculated Mw	Isoform 1: 110 kDa Isoform 2: 98 kDa
PTM	Ubiquitinated. Deubiquitinated by USP8/UBPY. [UniProt]
Cellular Localization	Nucleus. Cytoplasm, cytoskeleton, spindle. Midbody, Midbody ring. Note=Localizes to the interzone of mitotic spindles. Detected at the midbody during later stages of mitotic cytokinesis. [UniProt]

Images



HeLa

ARG41241 anti-KIF23 / MKLP1 antibody WB image

Western blot: HeLa cell lysate stained with ARG41241 anti-KIF23 / MKLP1 antibody.