

ARG41232 anti-Myotilin antibody

Package: 50 µg
Store at: -20°C

Summary

Product Description	Goat Polyclonal antibody recognizes Myotilin
Tested Reactivity	Hu
Tested Application	WB
Host	Goat
Clonality	Polyclonal
Isotype	IgG
Target Name	Myotilin
Species	Human
Immunogen	Synthetic peptide around the internal region of Human Myotilin. (C-DSQQHNSEHARLQ) (NP_006781.1; NP_001129412.1)
Conjugation	Un-conjugated
Alternate Names	TTOD; Titin immunoglobulin domain protein; LGMD1; TTID; 57 kDa cytoskeletal protein; Myofibrillar titin-like Ig domains protein; Myotilin; LGMD1A; MFM3

Application Instructions

Application table	Application	Dilution
	WB	0.1 - 0.3 µg/ml
Application Note	WB: Recommend incubate at RT for 1h. * The dilutions indicate recommended starting dilutions and the optimal dilutions or concentrations should be determined by the scientist.	
Observed Size	~ 60 kDa	

Properties

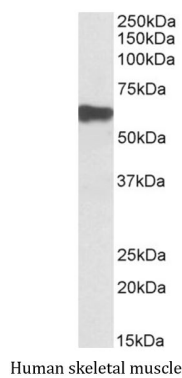
Form	Liquid
Purification	Ammonium sulphate precipitation followed by affinity purification with immunogen.
Buffer	Tris saline (pH 7.3), 0.02% Sodium azide and 0.5% BSA.
Preservative	0.02% Sodium azide
Stabilizer	0.5% BSA
Concentration	0.5 mg/ml
Storage instruction	For continuous use, store undiluted antibody at 2-8°C for up to a week. For long-term storage, aliquot and store at -20°C or below. Storage in frost free freezers is not recommended. Avoid repeated freeze/thaw cycles. Suggest spin the vial prior to opening. The antibody solution should be gently mixed before use.

Note For laboratory research only, not for drug, diagnostic or other use.

Bioinformation

Gene Symbol	MYOT
Gene Full Name	myotilin
Background	This gene encodes a cytoskeletal protein which plays a significant role in the stability of thin filaments during muscle contraction. This protein binds F-actin, crosslinks actin filaments, and prevents latrunculin A-induced filament disassembly. Mutations in this gene have been associated with limb-girdle muscular dystrophy and myofibrillar myopathies. Several alternatively spliced transcript variants of this gene have been described, but the full-length nature of some of these variants has not been determined.[provided by RefSeq, Oct 2008]
Function	Component of a complex of multiple actin cross-linking proteins. Involved in the control of myofibril assembly and stability at the Z lines in muscle cells. [UniProt]
Calculated Mw	55 kDa
Cellular Localization	Cell membrane, sarcolemma. Cytoplasm, cytoskeleton. Cytoplasm, myofibril, sarcomere, Z line. Note=Sarcomeric, also localized to the sarcolemma (PubMed:10369880). Colocalizes with MYOZ1 at the Z-lines in skeletal muscle (PubMed:16076904). [UniProt]

Images



ARG41232 anti-Myotilin antibody WB image

Western blot: 35 µg of Human skeletal muscle lysate (in RIPA buffer) stained with ARG41232 anti-Myotilin antibody at 0.1 µg/ml dilution and incubated at RT for 1 hour.