

ARG41230 anti-RUFY1 antibody

Package: 50 µg
Store at: -20°C

Summary

Product Description	Goat Polyclonal antibody recognizes RUFY1
Tested Reactivity	Hu
Predict Reactivity	Ms, Rat, Cow, Dog
Tested Application	IHC-P, WB
Host	Goat
Clonality	Polyclonal
Isotype	IgG
Target Name	RUFY1
Species	Human
Immunogen	Synthetic peptide around the internal region of Human RUFY1. (C-QKNEAITSFEGKT) (NP_079434.3; NP_001035541.1)
Conjugation	Un-conjugated
Alternate Names	FYVE-finger protein EIP1; RUN and FYVE domain-containing protein 1; ZFYVE12; Zinc finger FYVE domain-containing protein 12; Rab4-interacting protein; La-binding protein 1; RABIP4

Application Instructions

Application table	Application	Dilution
	IHC-P	5 µg/ml
	WB	0.05 - 0.2 µg/ml
Application Note	WB: Recommend incubate at RT for 1h. IHC-P: Antigen Retrieval: Steam tissue section in Citrate buffer (pH 6.0). * The dilutions indicate recommended starting dilutions and the optimal dilutions or concentrations should be determined by the scientist.	
Observed Size	~ 80 kDa	

Properties

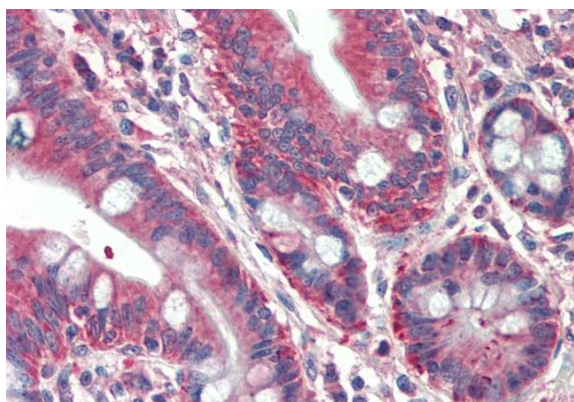
Form	Liquid
Purification	Ammonium sulphate precipitation followed by affinity purification with immunogen.
Buffer	Tris saline (pH 7.3), 0.02% Sodium azide and 0.5% BSA.
Preservative	0.02% Sodium azide
Stabilizer	0.5% BSA
Concentration	0.5 mg/ml

Storage instruction	For continuous use, store undiluted antibody at 2-8°C for up to a week. For long-term storage, aliquot and store at -20°C or below. Storage in frost free freezers is not recommended. Avoid repeated freeze/thaw cycles. Suggest spin the vial prior to opening. The antibody solution should be gently mixed before use.
Note	For laboratory research only, not for drug, diagnostic or other use.

Bioinformation

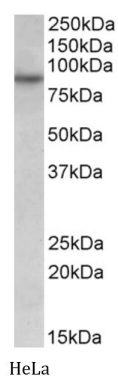
Gene Symbol	RUFY1
Gene Full Name	RUN and FYVE domain containing 1
Background	This gene encodes a protein that contains a RUN domain and a FYVE-type zinc finger domain. The encoded protein binds to phosphatidylinositol-3-phosphate (PI3P) and plays a role in early endosomal trafficking, tethering and fusion through interactions with small GTPases including Rab4, Rab5 and Rab14. Alternatively spliced transcript variants encoding multiple isoforms have been observed for this gene. [provided by RefSeq, Dec 2011]
Function	Binds phospholipid vesicles containing phosphatidylinositol 3-phosphate and participates in early endosomal trafficking. [UniProt]
Calculated Mw	80 kDa
PTM	Phosphorylation on Tyr-389 and/or Tyr-400 is required for interaction with BMX and endosomal targeting. [UniProt]
Cellular Localization	Cytoplasm. Early endosome membrane; Peripheral membrane protein. [UniProt]

Images



ARG41230 anti-RUFY1 antibody IHC-P image

Immunohistochemistry: Paraffin-embedded Human small intestine tissue stained with ARG41230 anti-RUFY1 antibody at 5 µg/ml dilution. Antigen Retrieval: Steam tissue section in Citrate buffer (pH 6.0).



ARG41230 anti-RUFY1 antibody WB image

Western blot: 35 µg of HeLa cell lysate (in RIPA buffer) stained with ARG41230 anti-RUFY1 antibody at 0.05 µg/ml dilution and incubated at RT for 1 hour.