

## ARG41227 anti-SPARCL1 antibody

Package: 50 µg  
Store at: -20°C

### Summary

Product Description	Rabbit Polyclonal antibody recognizes SPARCL1
Tested Reactivity	Hu, Rat
Predict Reactivity	Ms, Hm
Tested Application	IHC-P
Host	Rabbit
Clonality	Polyclonal
Isotype	IgG
Target Name	SPARCL1
Species	Human
Immunogen	Synthetic peptide corresponding to aa. 649-664 of Human SPARCL1. (HCFGIKKEEDIDENLLF)
Conjugation	Un-conjugated
Alternate Names	SPARC-like protein 1; High endothelial venule protein; MAST 9; PIG33; Hevin; MAST9; SC1

### Application Instructions

Application table	Application	Dilution
	IHC-P	1:200 - 1:1000
Application Note	* The dilutions indicate recommended starting dilutions and the optimal dilutions or concentrations should be determined by the scientist.	
Observed Size	~ 75 kDa	

### Properties

Form	Liquid
Purification	Affinity purification with immunogen.
Buffer	0.2% Na <sub>2</sub> HPO <sub>4</sub> , 0.9% NaCl, 0.05% Thimerosal, 0.05% Sodium azide and 5% BSA.
Preservative	0.05% Thimerosal and 0.05% Sodium azide
Stabilizer	5% BSA
Concentration	0.5 mg/ml
Storage instruction	For continuous use, store undiluted antibody at 2-8°C for up to a week. For long-term storage, aliquot and store at -20°C or below. Storage in frost free freezers is not recommended. Avoid repeated freeze/thaw cycles. Suggest spin the vial prior to opening. The antibody solution should be gently mixed before use.
Note	For laboratory research only, not for drug, diagnostic or other use.

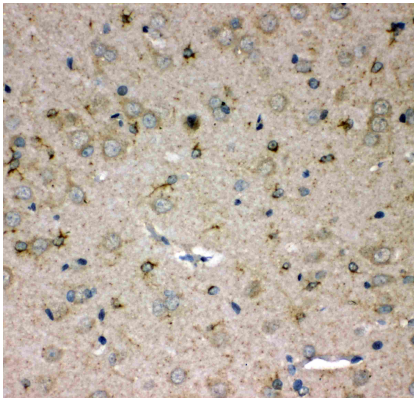
## Bioinformation

---

Gene Symbol	SPARCL1
Gene Full Name	SPARC-like 1 (hevin)
Calculated Mw	75 kDa
PTM	N- and O-glycosylated. O-glycosylated with a core 1 or possibly core 8 glycan. [UniProt]
Cellular Localization	Secreted, extracellular space, extracellular matrix. [UniProt]

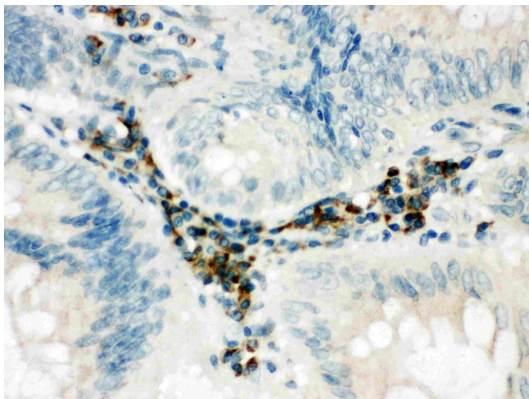
## Images

---



ARG41227 anti-SPARCL1 antibody IHC-P image

Immunohistochemistry: Paraffin-embedded Rat brain tissue stained with ARG41227 anti-SPARCL1 antibody.



ARG41227 anti-SPARCL1 antibody IHC-P image

Immunohistochemistry: Paraffin-embedded Human intestinal cancer tissue stained with ARG41227 anti-SPARCL1 antibody.