

**ARG41222**  
anti-POLR1C antibodyPackage: 100 µl  
Store at: -20°C

### Summary

Product Description	Rabbit Polyclonal antibody recognizes POLR1C
Tested Reactivity	Hu, Ms
Tested Application	IHC-P, WB
Host	Rabbit
Clonality	Polyclonal
Isotype	IgG
Target Name	POLR1C
Species	Human
Immunogen	KLH-conjugated synthetic peptide corresponding to aa. 319-346 of Human POLR1C.
Conjugation	Un-conjugated
Alternate Names	RPC40; RPA39; DNA-directed RNA polymerase I subunit C; RPA5; RNA polymerases I and III subunit AC1; DNA-directed RNA polymerases I and III subunit RPAC1; AC40; RPA40; RPAC1; DNA-directed RNA polymerases I and III 40 kDa polypeptide; TCS3

### Application Instructions

Application table	Application	Dilution
	IHC-P	1:10 - 1:50
	WB	1:1000
Application Note	* The dilutions indicate recommended starting dilutions and the optimal dilutions or concentrations should be determined by the scientist.	
Positive Control	HeLa	
Observed Size	~ 40 kDa	

### Properties

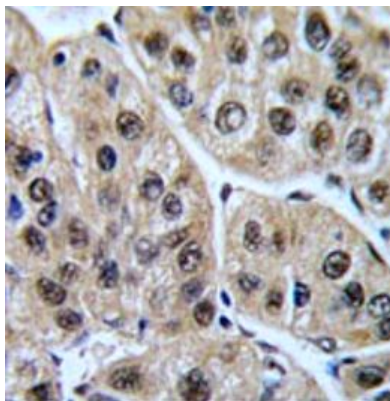
Form	Liquid
Purification	This antibody is prepared by Saturated Ammonium Sulfate (SAS) precipitation followed by dialysis against PBS.
Buffer	PBS and 0.09% (W/V) Sodium azide.
Preservative	0.09% (W/V) Sodium azide.
Storage instruction	For continuous use, store undiluted antibody at 2-8°C for up to a week. For long-term storage, aliquot and store at -20°C or below. Storage in frost free freezers is not recommended. Avoid repeated freeze/thaw cycles. Suggest spin the vial prior to opening. The antibody solution should be gently mixed before use.

Note For laboratory research only, not for drug, diagnostic or other use.

## Bioinformation

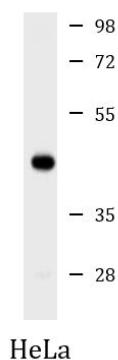
Gene Symbol	POLR1C
Gene Full Name	polymerase (RNA) I polypeptide C, 30kDa
Background	The protein encoded by this gene is a subunit of both RNA polymerase I and RNA polymerase III complexes. The encoded protein is part of the Pol core element. Defects in this gene have been associated with Treacher Collins syndrome (TCS). [provided by RefSeq, Mar 2011]
Function	DNA-dependent RNA polymerase catalyzes the transcription of DNA into RNA using the four ribonucleoside triphosphates as substrates. Common component of RNA polymerases I and III which synthesize ribosomal RNA precursors and small RNAs, such as 5S rRNA and tRNAs, respectively. RPAC1 is part of the Pol core element with the central large cleft and probably a clamp element that moves to open and close the cleft (By similarity). [UniProt]
Calculated Mw	39 kDa
Cellular Localization	Nucleus. [UniProt]

## Images



ARG41222 anti-POLR1C antibody IHC-P image

Immunohistochemistry: Formalin-fixed and paraffin-embedded Human hepatocarcinoma tissue stained with ARG41222 anti-POLR1C antibody.



ARG41222 anti-POLR1C antibody WB image

Western blot: 20 ug of HeLa whole cell lysate stained with ARG41222 anti-POLR1C antibody at 1:2000 dilution.