

ARG41177 anti-Myotilin antibody

Package: 100 µl
Store at: -20°C

Summary

Product Description	Rabbit Polyclonal antibody recognizes Myotilin
Tested Reactivity	Hu, Ms, Rat
Tested Application	ICC/IF, WB
Host	Rabbit
Clonality	Polyclonal
Isotype	IgG
Target Name	Myotilin
Species	Human
Immunogen	Recombinant fusion protein corresponding to aa. 259-314 of Human Myotilin (NP_001129412.1).
Conjugation	Un-conjugated
Alternate Names	TTOD; Titin immunoglobulin domain protein; LGMD1; TTID; 57 kDa cytoskeletal protein; Myofibrillar titin-like Ig domains protein; Myotilin; LGMD1A; MFM3

Application Instructions

Application table	Application	Dilution
	ICC/IF	1:50 - 1:200
	WB	1:500 - 1:2000
Application Note	* The dilutions indicate recommended starting dilutions and the optimal dilutions or concentrations should be determined by the scientist.	
Positive Control	293T	
Observed Size	55 kDa	

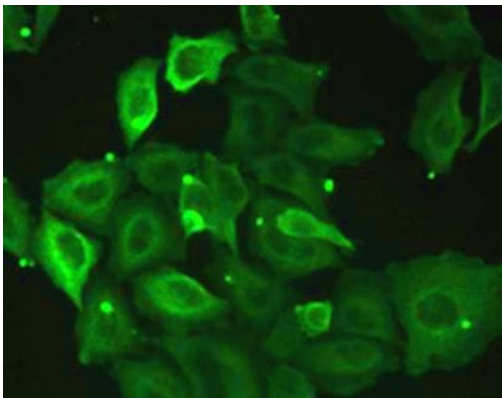
Properties

Form	Liquid
Purification	Affinity purified.
Buffer	PBS (pH 7.3), 0.02% Sodium azide and 50% Glycerol.
Preservative	0.02% Sodium azide
Stabilizer	50% Glycerol
Storage instruction	For continuous use, store undiluted antibody at 2-8°C for up to a week. For long-term storage, aliquot and store at -20°C. Storage in frost free freezers is not recommended. Avoid repeated freeze/thaw cycles. Suggest spin the vial prior to opening. The antibody solution should be gently mixed before use.
Note	For laboratory research only, not for drug, diagnostic or other use.

Bioinformation

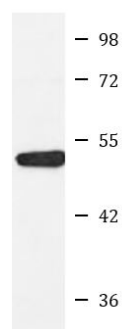
Gene Symbol	MYOT
Gene Full Name	myotilin
Background	This gene encodes a cytoskeletal protein which plays a significant role in the stability of thin filaments during muscle contraction. This protein binds F-actin, crosslinks actin filaments, and prevents latrunculin A-induced filament disassembly. Mutations in this gene have been associated with limb-girdle muscular dystrophy and myofibrillar myopathies. Several alternatively spliced transcript variants of this gene have been described, but the full-length nature of some of these variants has not been determined.[provided by RefSeq, Oct 2008]
Function	Component of a complex of multiple actin cross-linking proteins. Involved in the control of myofibril assembly and stability at the Z lines in muscle cells. [UniProt]
Calculated Mw	55 kDa
Cellular Localization	Cell membrane, sarcolemma. Cytoplasm, cytoskeleton. Cytoplasm, myofibril, sarcomere, Z line. Note=Sarcomeric, also localized to the sarcolemma (PubMed:10369880). Colocalizes with MYOZ1 at the Z-lines in skeletal muscle (PubMed:16076904). [UniProt]

Images



ARG41177 anti-Myotilin antibody ICC/IF image

Immunofluorescence: U2OS cells stained with ARG41177 anti-Myotilin antibody.



ARG41177 anti-Myotilin antibody WB image

Western blot: 25 µg of 293T cell lysate stained with ARG41177 anti-Myotilin antibody at 1:1000 dilution.