

**ARG41165**  
anti-Cathepsin B antibodyPackage: 100 µl  
Store at: -20°C

### Summary

Product Description	Rabbit Polyclonal antibody recognizes Cathepsin B
Tested Reactivity	Hu, Ms, Rat
Tested Application	ICC/IF, IHC-P, WB
Host	Rabbit
Clonality	Polyclonal
Isotype	IgG
Target Name	Cathepsin B
Species	Human
Immunogen	Recombinant fusion protein corresponding to aa. 1-339 of Human Cathepsin B (NP_001899.1).
Conjugation	Un-conjugated
Alternate Names	EC 3.4.22.1; Cathepsin B; APPS; CPSB; APP secretase; Cathepsin B1

### Application Instructions

Application table	Application	Dilution
	ICC/IF	1:50 - 1:200
	IHC-P	1:50 - 1:200
	WB	1:500 - 1:2000
Application Note	* The dilutions indicate recommended starting dilutions and the optimal dilutions or concentrations should be determined by the scientist.	
Positive Control	MCF7	
Observed Size	42 kDa	

### Properties

Form	Liquid
Purification	Affinity purified.
Buffer	PBS (pH 7.3), 0.02% Sodium azide and 50% Glycerol.
Preservative	0.02% Sodium azide
Stabilizer	50% Glycerol
Storage instruction	For continuous use, store undiluted antibody at 2-8°C for up to a week. For long-term storage, aliquot and store at -20°C. Storage in frost free freezers is not recommended. Avoid repeated freeze/thaw cycles. Suggest spin the vial prior to opening. The antibody solution should be gently mixed before use.

Note

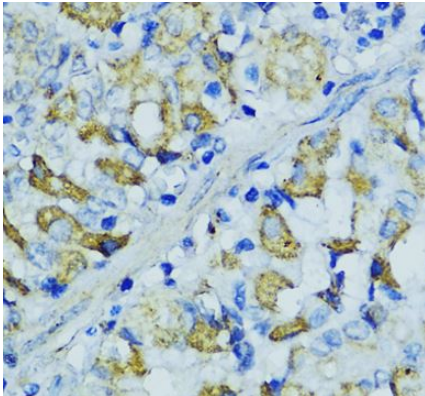
For laboratory research only, not for drug, diagnostic or other use.

## Bioinformation

---

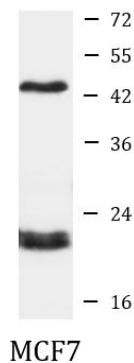
Gene Symbol	CTSB
Gene Full Name	cathepsin B
Background	The protein encoded by this gene is a lysosomal cysteine proteinase composed of a dimer of disulfide-linked heavy and light chains, both produced from a single protein precursor. It is also known as amyloid precursor protein secretase and is involved in the proteolytic processing of amyloid precursor protein (APP). Incomplete proteolytic processing of APP has been suggested to be a causative factor in Alzheimer disease, the most common cause of dementia. Overexpression of the encoded protein, which is a member of the peptidase C1 family, has been associated with esophageal adenocarcinoma and other tumors. At least five transcript variants encoding the same protein have been found for this gene. [provided by RefSeq, Jul 2008]
Function	Thiol protease which is believed to participate in intracellular degradation and turnover of proteins. Has also been implicated in tumor invasion and metastasis. [UniProt]
Calculated Mw	38 kDa
Cellular Localization	Lysosome. Melanosome. Secreted, extracellular space. Note=Identified by mass spectrometry in melanosome fractions from stage I to stage IV. [UniProt]

## Images



ARG41165 anti-Cathepsin B antibody IHC-P image

Immunohistochemistry: Paraffin-embedded Human stomach tissue stained with ARG41165 anti-Cathepsin B antibody at 1:100 dilution.



ARG41165 anti-Cathepsin B antibody WB image

Western blot: 25 µg of MCF7 cell lysate stained with ARG41165 anti-Cathepsin B antibody at 1:1000 dilution.