

ARG41153 anti-GPR52 antibody

Package: 50 µl
Store at: -20°C

Summary

Product Description	Rabbit Polyclonal antibody recognizes GPR52
Tested Reactivity	Rat
Predict Reactivity	Hu, Ms, Cow, Gpig, Pig
Tested Application	WB
Host	Rabbit
Clonality	Polyclonal
Isotype	IgG
Target Name	GPR52
Species	Rat
Immunogen	Synthetic peptide around the middle region of Rat GPR52. (within the following region: RARFPSHEVDASREAGHSPDRRYAMVLFRITSVFYMLWLPYIIYFLESS)
Conjugation	Un-conjugated
Alternate Names	Probable G-protein coupled receptor 52

Application Instructions

Predict Reactivity Note Predicted Homology Based On Immunogen Sequence: Cow: 82%; Guinea pig: 93%; Human: 100%; Mouse: 79%; Pig: 100%

Application table	Application	Dilution
	WB	1 µg/ml

Application Note * The dilutions indicate recommended starting dilutions and the optimal dilutions or concentrations should be determined by the scientist.

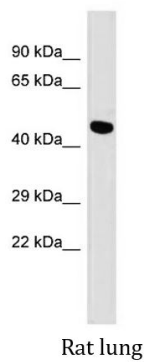
Properties

Form	Liquid
Purification	Affinity purified.
Buffer	PBS, 0.09% (w/v) Sodium azide and 2% Sucrose.
Preservative	0.09% (w/v) Sodium azide
Stabilizer	2% Sucrose
Storage instruction	For continuous use, store undiluted antibody at 2-8°C for up to a week. For long-term storage, aliquot and store at -20°C or below. Storage in frost free freezers is not recommended. Avoid repeated freeze/thaw cycles. Suggest spin the vial prior to opening. The antibody solution should be gently mixed before use.
Note	For laboratory research only, not for drug, diagnostic or other use.

Bioinformation

Gene Symbol	GPR52
Gene Full Name	G protein-coupled receptor 52
Background	Members of the G protein-coupled receptor (GPR) family play important roles in signal transduction from the external environment to the inside of the cell.[supplied by OMIM, Jul 2002]
Function	Orphan receptor. [UniProt]
Calculated Mw	41 kDa
Cellular Localization	Cell membrane; Multi-pass membrane protein. [UniProt]

Images



ARG41153 anti-GPR52 antibody WB image

Western blot: Rat lung lysate stained with ARG41153 anti-GPR52 antibody at 1 μ g/ml dilution.