

ARG41125 anti-MRPL23 antibody

Package: 100 µl

Store at: -20°C

Summary

Product Description	Rabbit Polyclonal antibody recognizes MRPL23
Tested Reactivity	Hu, Ms, Rat
Tested Application	ICC/IF, IHC-P, WB
Host	Rabbit
Clonality	Polyclonal
Isotype	IgG
Target Name	MRPL23
Species	Human
Immunogen	Recombinant fusion protein corresponding to aa. 1-153 of Human MRPL23 (NP_066957.3).
Conjugation	Un-conjugated
Alternate Names	L23mt; Ribosomal protein L23-like; RPL23L; L23MRP; RPL23; MRP-L23; 39S ribosomal protein L23, mitochondrial; L23 mitochondrial-related protein

Application Instructions

Application table	Application	Dilution
	ICC/IF	1:50 - 1:200
	IHC-P	1:50 - 1:200
	WB	1:500 - 1:2000
Application Note	* The dilutions indicate recommended starting dilutions and the optimal dilutions or concentrations should be determined by the scientist.	
Positive Control	Rat kidney	
Observed Size	16 kDa	

Properties

Form	Liquid
Purification	Affinity purified.
Buffer	PBS (pH 7.3), 0.02% Sodium azide and 50% Glycerol.
Preservative	0.02% Sodium azide
Stabilizer	50% Glycerol
Storage instruction	For continuous use, store undiluted antibody at 2-8°C for up to a week. For long-term storage, aliquot and store at -20°C. Storage in frost free freezers is not recommended. Avoid repeated freeze/thaw cycles. Suggest spin the vial prior to opening. The antibody solution should be gently mixed before use.

Note

For laboratory research only, not for drug, diagnostic or other use.

Bioinformation

Gene Symbol MRPL23

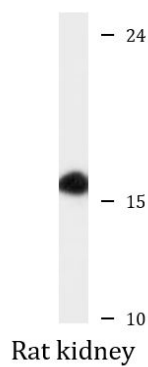
Gene Full Name mitochondrial ribosomal protein L23

Background Mammalian mitochondrial ribosomal proteins are encoded by nuclear genes and help in protein synthesis within the mitochondrion. Mitochondrial ribosomes (mitoribosomes) consist of a small 28S subunit and a large 39S subunit. They have an estimated 75% protein to rRNA composition compared to prokaryotic ribosomes, where this ratio is reversed. Another difference between mammalian mitoribosomes and prokaryotic ribosomes is that the latter contain a 5S rRNA. Among different species, the proteins comprising the mitoribosome differ greatly in sequence, and sometimes in biochemical properties, which prevents easy recognition by sequence homology. This gene encodes a 39S subunit protein. The gene is biallelically expressed, despite its location within a region of imprinted genes on chromosome 11. [provided by RefSeq, Jul 2008]

Calculated Mw 18 kDa

Cellular Localization Mitochondrion. [UniProt]

Images



ARG41125 anti-MRPL23 antibody WB image

Western blot: 25 µg of Rat kidney lysate stained with ARG41125 anti-MRPL23 antibody at 1:1000 dilution.