

ARG41119 anti-RPL21 antibody

Package: 100 µl
Store at: -20°C

Summary

Product Description	Rabbit Polyclonal antibody recognizes RPL21
Tested Reactivity	Hu, Ms, Rat
Tested Application	ICC/IF, IHC-P, WB
Host	Rabbit
Clonality	Polyclonal
Isotype	IgG
Target Name	RPL21
Species	Human
Immunogen	Recombinant fusion protein corresponding to aa. 1-160 of Human RPL21 (NP_000973.2).
Conjugation	Un-conjugated
Alternate Names	L21; 60S ribosomal protein L21; HYPT12

Application Instructions

Application table	Application	Dilution
	ICC/IF	1:50 - 1:200
	IHC-P	1:50 - 1:200
	WB	1:500 - 1:2000
Application Note	* The dilutions indicate recommended starting dilutions and the optimal dilutions or concentrations should be determined by the scientist.	
Positive Control	Raji	
Observed Size	18 kDa	

Properties

Form	Liquid
Purification	Affinity purified.
Buffer	PBS (pH 7.3), 0.02% Sodium azide and 50% Glycerol.
Preservative	0.02% Sodium azide
Stabilizer	50% Glycerol
Storage instruction	For continuous use, store undiluted antibody at 2-8°C for up to a week. For long-term storage, aliquot and store at -20°C. Storage in frost free freezers is not recommended. Avoid repeated freeze/thaw cycles. Suggest spin the vial prior to opening. The antibody solution should be gently mixed before use.

Note

For laboratory research only, not for drug, diagnostic or other use.

Bioinformation

Gene Symbol RPL21

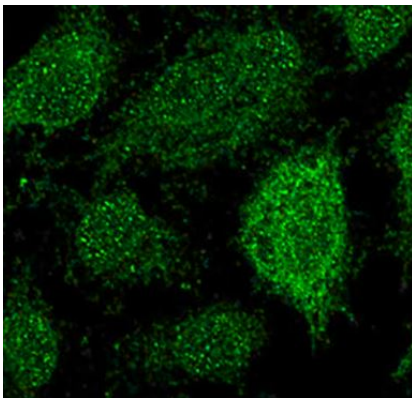
Gene Full Name ribosomal protein L21

Background Ribosomes, the organelles that catalyze protein synthesis, consist of a small 40S subunit and a large 60S subunit. Together these subunits are composed of 4 RNA species and approximately 80 structurally distinct proteins. This gene encodes a ribosomal protein that is a component of the 60S subunit. The protein belongs to the L21E family of ribosomal proteins. It is located in the cytoplasm. As is typical for genes encoding ribosomal proteins, there are multiple processed pseudogenes of this gene dispersed through the genome. [provided by RefSeq, Jul 2008]

Calculated Mw 19 kDa

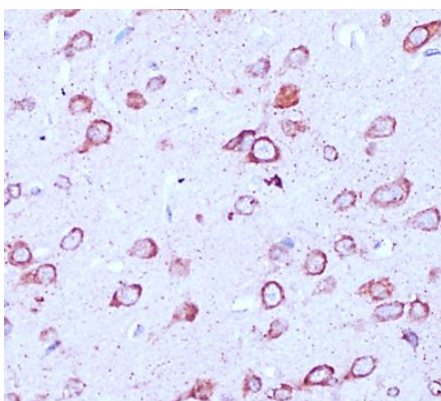
Cellular Localization Cytoplasm, cytosol. Cytoplasm. Endoplasmic reticulum. Note=Detected on cytosolic polysomes (PubMed:25957688). Detected in ribosomes that are associated with the rough endoplasmic reticulum (By similarity). [UniProt]

Images



ARG41119 anti-RPL21 antibody ICC/IF image

Immunofluorescence: HeLa cells stained with ARG41119 anti-RPL21 antibody at 1:200 dilution.



ARG41119 anti-RPL21 antibody IHC-P image

Immunohistochemistry: Paraffin-embedded Rat brain stained with ARG41119 anti-RPL21 antibody at 1:100 dilution.

ARG41119 anti-RPL21 antibody WB image

Western blot: 25 µg of Raji cell lysate stained with ARG41119 anti-RPL21 antibody at 1:1000 dilution.

