

ARG41066 anti-UBE2I / UBC9 antibody

Package: 100 µl
Store at: -20°C

Summary

Product Description	Rabbit Polyclonal antibody recognizes UBE2I / UBC9
Tested Reactivity	Hu, Ms, Rat
Tested Application	FACS, ICC/IF, IHC-P, IP, WB
Host	Rabbit
Clonality	Polyclonal
Isotype	IgG
Target Name	UBE2I / UBC9
Species	Human
Immunogen	Synthetic peptide derived from Human UBE2I / UBC9.
Conjugation	Un-conjugated
Alternate Names	UBC9; Ubiquitin-protein ligase I; EC 6.3.2.-; SUMO-conjugating enzyme UBC9; Ubiquitin carrier protein I; Ubiquitin-conjugating enzyme E2 I; SUMO-protein ligase; p18; C358B7.1; P18; Ubiquitin carrier protein 9

Application Instructions

Application table	Application	Dilution
	FACS	Assay-dependent
	ICC/IF	1:50 - 1:200
	IHC-P	1:50 - 1:200
	IP	1:50
	WB	1:500 - 1:2000

Application Note * The dilutions indicate recommended starting dilutions and the optimal dilutions or concentrations should be determined by the scientist.

Properties

Form	Liquid
Purification	Affinity purified.
Buffer	PBS (pH 7.4), 150 mM NaCl, 0.02% Sodium azide and 50% Glycerol.
Preservative	0.02% Sodium azide
Stabilizer	50% Glycerol
Storage instruction	For continuous use, store undiluted antibody at 2-8°C for up to a week. For long-term storage, aliquot and store at -20°C. Storage in frost free freezers is not recommended. Avoid repeated freeze/thaw cycles. Suggest spin the vial prior to opening. The antibody solution should be gently mixed before use.

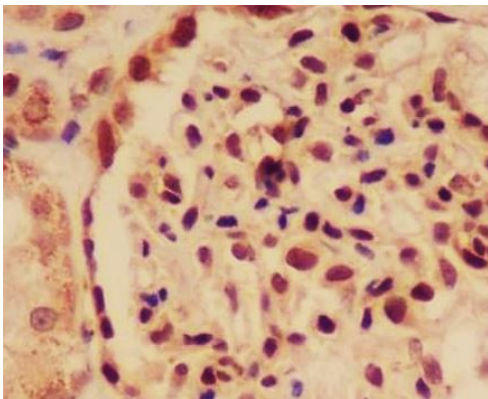
Note

For laboratory research only, not for drug, diagnostic or other use.

Bioinformation

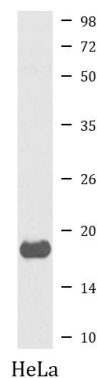
Gene Symbol	UBE2I
Gene Full Name	ubiquitin-conjugating enzyme E2I
Background	The modification of proteins with ubiquitin is an important cellular mechanism for targeting abnormal or short-lived proteins for degradation. Ubiquitination involves at least three classes of enzymes: ubiquitin-activating enzymes, or E1s, ubiquitin-conjugating enzymes, or E2s, and ubiquitin-protein ligases, or E3s. This gene encodes a member of the E2 ubiquitin-conjugating enzyme family. Four alternatively spliced transcript variants encoding the same protein have been found for this gene. [provided by RefSeq, Jul 2008]
Function	Accepts the ubiquitin-like proteins SUMO1, SUMO2, SUMO3 and SUMO4 from the UBLE1A-UBLE1B E1 complex and catalyzes their covalent attachment to other proteins with the help of an E3 ligase such as RANBP2 or CBX4. Can catalyze the formation of poly-SUMO chains. Necessary for sumoylation of FOXL2 and KAT5. Essential for nuclear architecture and chromosome segregation. Sumoylates p53/TP53 at 'Lys-386'. [UniProt]
Calculated Mw	18 kDa
PTM	Phosphorylation at Ser-71 significantly enhances SUMOylation activity. [UniProt]
Cellular Localization	Nucleus. Cytoplasm. Note=Mainly nuclear. In spermatocytes, localizes in synaptonemal complexes. Recruited by BCL11A into the nuclear body (By similarity). [UniProt]

Images



ARG41066 anti-UBE2I / UBC9 antibody IHC-P image

Immunohistochemistry: Paraffin-embedded Human kidney stained with ARG41066 anti-UBE2I / UBC9 antibody.



ARG41066 anti-UBE2I / UBC9 antibody WB image

Western blot: HeLa cell lysate stained with ARG41066 anti-UBE2I / UBC9 antibody.