

ARG41054 anti-HACE1 antibody

Package: 100 µl
Store at: -20°C

Summary

Product Description	Rabbit Polyclonal antibody recognizes HACE1
Tested Reactivity	Hu, Ms, Rat
Tested Application	IHC-P, WB
Host	Rabbit
Clonality	Polyclonal
Isotype	IgG
Target Name	HACE1
Species	Human
Immunogen	Synthetic peptide within aa. 1-100 of Human HACE1 (NP_065822.2).
Conjugation	Un-conjugated
Alternate Names	HECT domain and ankyrin repeat-containing E3 ubiquitin-protein ligase 1; EC 6.3.2.-; E3 ubiquitin-protein ligase HACE1

Application Instructions

Application table	Application	Dilution
	IHC-P	1:50 - 1:200
	WB	1:500 - 1:2000
Application Note	* The dilutions indicate recommended starting dilutions and the optimal dilutions or concentrations should be determined by the scientist.	
Positive Control	293T	
Observed Size	102 kDa	

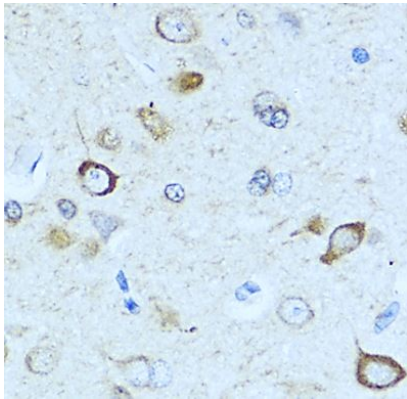
Properties

Form	Liquid
Purification	Affinity purified.
Buffer	PBS (pH 7.3), 0.02% Sodium azide and 50% Glycerol.
Preservative	0.02% Sodium azide
Stabilizer	50% Glycerol
Storage instruction	For continuous use, store undiluted antibody at 2-8°C for up to a week. For long-term storage, aliquot and store at -20°C. Storage in frost free freezers is not recommended. Avoid repeated freeze/thaw cycles. Suggest spin the vial prior to opening. The antibody solution should be gently mixed before use.
Note	For laboratory research only, not for drug, diagnostic or other use.

Bioinformation

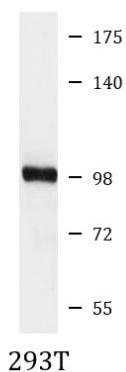
Gene Symbol	HACE1
Gene Full Name	HECT domain and ankyrin repeat containing E3 ubiquitin protein ligase 1
Function	E3 ubiquitin-protein ligase involved in Golgi membrane fusion and regulation of small GTPases. Acts as a regulator of Golgi membrane dynamics during the cell cycle: recruited to Golgi membrane by Rab proteins and regulates postmitotic Golgi membrane fusion. Acts by mediating ubiquitination during mitotic Golgi disassembly, ubiquitination serving as a signal for Golgi reassembly later, after cell division. Specifically interacts with GTP-bound RAC1, mediating ubiquitination and subsequent degradation of active RAC1, thereby playing a role in host defense against pathogens. May also act as a transcription regulator via its interaction with RARB. [UniProt]
Calculated Mw	102 kDa
Cellular Localization	Golgi apparatus, Golgi stack membrane. Cytoplasm. Endoplasmic reticulum. Note=A significant portion localizes to the endoplasmic reticulum. Targeted to Golgi membrane via its interaction with Rab proteins. [UniProt]

Images



ARG41054 anti-HACE1 antibody IHC-P image

Immunohistochemistry: Paraffin-embedded Rat brain stained with ARG41054 anti-HACE1 antibody at 1:100 dilution.



ARG41054 anti-HACE1 antibody WB image

Western blot: 25 µg of 293T cell lysate stained with ARG41054 anti-HACE1 antibody at 1:1000 dilution.