

## ARG41042 anti-GPR68 / OGR1 antibody

Package: 50 µl  
Store at: -20°C

### Summary

Product Description	Rabbit Polyclonal antibody recognizes GPR68 / OGR1
Tested Reactivity	Hu, Ms, Rat
Tested Application	WB
Host	Rabbit
Clonality	Polyclonal
Isotype	IgG
Target Name	GPR68 / OGR1
Species	Human
Immunogen	Recombinant fusion protein corresponding to aa. 276-365 of Human GPR68 (NP_003476.3).
Conjugation	Un-conjugated
Alternate Names	G-protein coupled receptor 68; Sphingosylphosphorylcholine receptor; Ovarian cancer G-protein coupled receptor 1; GPR12A; OGR-1; OGR1

### Application Instructions

Application table	Application	Dilution
	WB	1:500 - 1:2000
Application Note	* The dilutions indicate recommended starting dilutions and the optimal dilutions or concentrations should be determined by the scientist.	
Positive Control	HL-60	
Observed Size	41 kDa	

### Properties

Form	Liquid
Purification	Affinity purified.
Buffer	PBS (pH 7.3), 0.02% Sodium azide and 50% Glycerol.
Preservative	0.02% Sodium azide
Stabilizer	50% Glycerol
Storage instruction	For continuous use, store undiluted antibody at 2-8°C for up to a week. For long-term storage, aliquot and store at -20°C. Storage in frost free freezers is not recommended. Avoid repeated freeze/thaw cycles. Suggest spin the vial prior to opening. The antibody solution should be gently mixed before use.
Note	For laboratory research only, not for drug, diagnostic or other use.

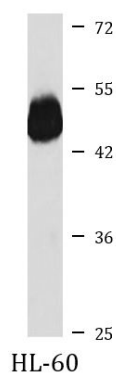
## Bioinformation

---

Gene Symbol	GPR68
Gene Full Name	G protein-coupled receptor 68
Function	Proton-sensing receptor involved in pH homeostasis. May represents an osteoblastic pH sensor regulating cell-mediated responses to acidosis in bone. Mediates its action by association with G proteins that stimulates inositol phosphate (IP) production or Ca(2+) mobilization. The receptor is almost silent at pH 7.8 but fully activated at pH 6.8. Function also as a metastasis suppressor gene in prostate cancer (By similarity). [UniProt]
Calculated Mw	41 kDa
Cellular Localization	Cell membrane; Multi-pass membrane protein. [UniProt]

## Images

---



ARG41042 anti-GPR68 / OGR1 antibody WB image

Western blot: 25 µg of HL-60 cell lysate stained with ARG41042 anti-GPR68 / OGR1 antibody at 1:1000 dilution.