

## ARG41037 anti-RPS4X / SCAR antibody

Package: 100 µl  
Store at: -20°C

### Summary

Product Description	Rabbit Polyclonal antibody recognizes RPS4X / SCAR
Tested Reactivity	Hu, Ms, Rat
Tested Application	WB
Host	Rabbit
Clonality	Polyclonal
Isotype	IgG
Target Name	RPS4X / SCAR
Species	Human
Immunogen	Recombinant fusion protein corresponding to aa. 66-263 of Human RPS4X (NP_000998.1).
Conjugation	Un-conjugated
Alternate Names	40S ribosomal protein S4, X isoform; DXS306; S4; Single copy abundant mRNA protein; RPS4; SCR10; SCAR; CCG2

### Application Instructions

Application table	Application	Dilution
	WB	1:500 - 1:2000
Application Note	* The dilutions indicate recommended starting dilutions and the optimal dilutions or concentrations should be determined by the scientist.	
Positive Control	HepG2	
Observed Size	30 kDa	

### Properties

Form	Liquid
Purification	Affinity purified.
Buffer	PBS (pH 7.3), 0.02% Sodium azide and 50% Glycerol.
Preservative	0.02% Sodium azide
Stabilizer	50% Glycerol
Storage instruction	For continuous use, store undiluted antibody at 2-8°C for up to a week. For long-term storage, aliquot and store at -20°C. Storage in frost free freezers is not recommended. Avoid repeated freeze/thaw cycles. Suggest spin the vial prior to opening. The antibody solution should be gently mixed before use.
Note	For laboratory research only, not for drug, diagnostic or other use.

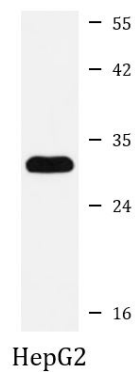
## Bioinformation

---

Gene Symbol	RPS4X
Gene Full Name	ribosomal protein S4, X-linked
Background	Cytoplasmic ribosomes, organelles that catalyze protein synthesis, consist of a small 40S subunit and a large 60S subunit. Together these subunits are composed of 4 RNA species and approximately 80 structurally distinct proteins. This gene encodes ribosomal protein S4, a component of the 40S subunit. Ribosomal protein S4 is the only ribosomal protein known to be encoded by more than one gene, namely this gene and ribosomal protein S4, Y-linked (RPS4Y). The 2 isoforms encoded by these genes are not identical, but are functionally equivalent. Ribosomal protein S4 belongs to the S4E family of ribosomal proteins. This gene is not subject to X-inactivation. It has been suggested that haploinsufficiency of the ribosomal protein S4 genes plays a role in Turner syndrome; however, this hypothesis is controversial. As is typical for genes encoding ribosomal proteins, there are multiple processed pseudogenes of this gene dispersed through the genome. [provided by RefSeq, Jul 2008]
Calculated Mw	30 kDa
Cellular Localization	Cytoplasm. Note=Localized in cytoplasmic mRNP granules containing untranslated mRNAs. [UniProt]

## Images

---



ARG41037 anti-RPS4X / SCAR antibody WB image

Western blot: 25 µg of HepG2 cell lysate stained with ARG41037 anti-RPS4X / SCAR antibody at 1:1000 dilution through one-step method.