

ARG40992 anti-Hsp 60 antibody

Package: 50 µg
Store at: -20°C

Summary

Product Description	Rabbit Polyclonal antibody recognizes Hsp 60
Tested Reactivity	Hu, Ms, Rat
Tested Application	ICC/IF, IHC-P, WB
Host	Rabbit
Clonality	Polyclonal
Isotype	IgG
Target Name	Hsp 60
Species	Human
Immunogen	Recombinant protein corresponding to A260-Q496 of Human Hsp 60.
Conjugation	Un-conjugated
Alternate Names	Heat shock protein 60; HuCHA60; 60 kDa heat shock protein, mitochondrial; GROEL; P60 lymphocyte protein; 60 kDa chaperonin; HSP-60; Mitochondrial matrix protein P1; HLD4; SPG13; HSP60; Chaperonin 60; Hsp60; CPN60; HSP65

Application Instructions

Application table	Application	Dilution
	ICC/IF	1:200 - 1:1000
	IHC-P	1:200 - 1:1000
	WB	1:500 - 1:2000

Application Note * The dilutions indicate recommended starting dilutions and the optimal dilutions or concentrations should be determined by the scientist.

Properties

Form	Liquid
Purification	Affinity purification with immunogen.
Buffer	0.2% Na ₂ HPO ₄ , 0.9% NaCl, 0.05% Sodium azide and 5% BSA.
Preservative	0.05% Sodium azide
Stabilizer	5% BSA
Concentration	0.5 mg/ml
Storage instruction	For continuous use, store undiluted antibody at 2-8°C for up to a week. For long-term storage, aliquot and store at -20°C or below. Storage in frost free freezers is not recommended. Avoid repeated freeze/thaw cycles. Suggest spin the vial prior to opening. The antibody solution should be gently mixed before use.

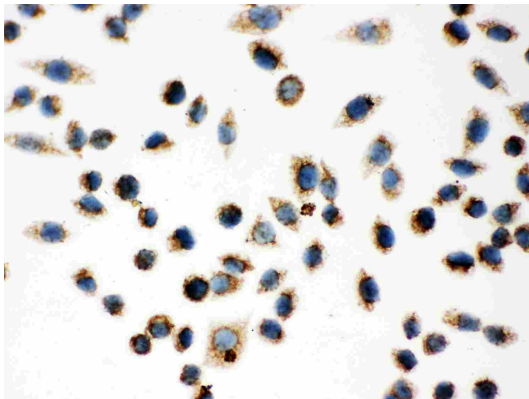
Note

For laboratory research only, not for drug, diagnostic or other use.

Bioinformation

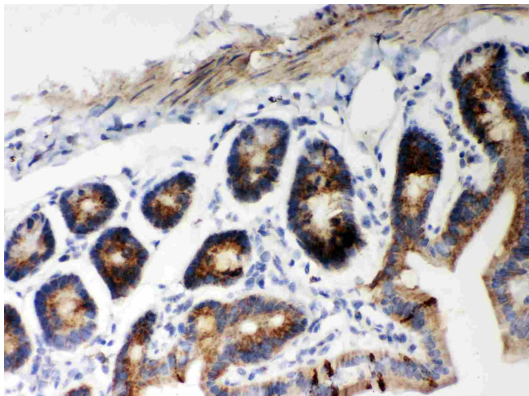
Gene Symbol	HSPD1
Gene Full Name	heat shock 60kDa protein 1 (chaperonin)
Background	This gene encodes a member of the chaperonin family. The encoded mitochondrial protein may function as a signaling molecule in the innate immune system. This protein is essential for the folding and assembly of newly imported proteins in the mitochondria. This gene is adjacent to a related family member and the region between the 2 genes functions as a bidirectional promoter. Several pseudogenes have been associated with this gene. Two transcript variants encoding the same protein have been identified for this gene. Mutations associated with this gene cause autosomal recessive spastic paraplegia 13. [provided by RefSeq, Jun 2010]
Function	Implicated in mitochondrial protein import and macromolecular assembly. May facilitate the correct folding of imported proteins. May also prevent misfolding and promote the refolding and proper assembly of unfolded polypeptides generated under stress conditions in the mitochondrial matrix. [UniProt]
Research Area	Controls and Markers antibody; Signaling Transduction antibody; Mitochondrial Marker antibody
Calculated Mw	61 kDa
Cellular Localization	Mitochondrion matrix. [UniProt]

Images



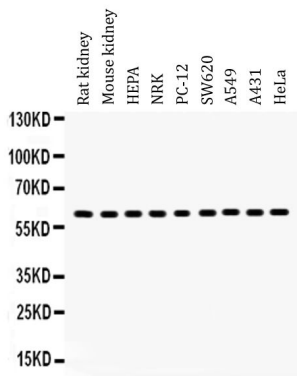
ARG40992 anti-Hsp 60 antibody ICC image

Immunocytochemistry: SMMC-7721 cells stained with ARG40992 anti-Hsp 60 antibody.



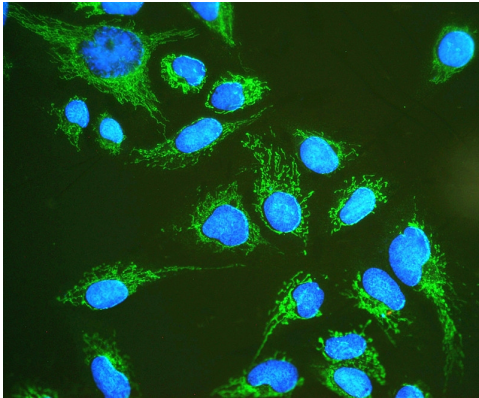
ARG40992 anti-Hsp 60 antibody IHC-P image

Immunohistochemistry: Paraffin-embedded Mouse intestine tissue stained with ARG40992 anti-Hsp 60 antibody.



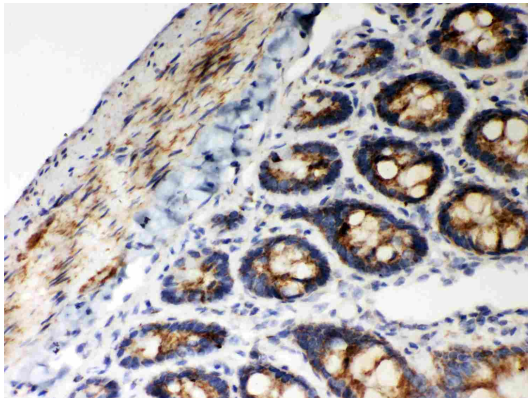
ARG40992 anti-Hsp 60 antibody WB image

Western blot: 50 μ g of Rat kidney, 50 μ g of Mouse kidney, 40 μ g of HEPA, 40 μ g of NRK, 40 μ g of PC-12, 40 μ g of SW620, 40 μ g of A549, 40 μ g of A431 and 40 μ g of HeLa whole cell lysates stained with ARG40992 anti-Hsp 60 antibody at 0.5 μ g/ml dilution.



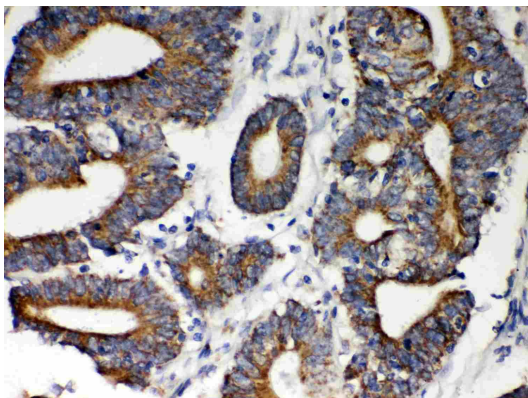
ARG40992 anti-Hsp 60 antibody ICC/IF image

Immunofluorescence: U2OS cells stained with ARG40992 anti-Hsp 60 antibody (green) at 2 μ g/ml, overnight at 4°C. DAPI (blue) for nuclear staining.



ARG40992 anti-Hsp 60 antibody IHC-P image

Immunohistochemistry: Paraffin-embedded Rat intestine tissue stained with ARG40992 anti-Hsp 60 antibody.



ARG40992 anti-Hsp 60 antibody IHC-P image

Immunohistochemistry: Paraffin-embedded Human intestinal cancer tissue stained with ARG40992 anti-Hsp 60 antibody.