

## ARG40972 anti-SDHB antibody

Package: 100 µl  
Store at: -20°C

### Summary

Product Description	Rabbit Polyclonal antibody recognizes SDHB
Tested Reactivity	Ms, Rat, Zfsh
Tested Application	WB
Host	Rabbit
Clonality	Polyclonal
Isotype	IgG
Target Name	SDHB
Species	Zebrafish
Immunogen	KLH-conjugated synthetic peptide corresponding to aa. 147-182 of Zebrafish SDHB.
Conjugation	Un-conjugated
Alternate Names	Ip; SDH2; SDH1; IP; EC 1.3.5.1; PGL4; CWS2; Succinate dehydrogenase [ubiquinone] iron-sulfur subunit, mitochondrial; SDHIP; Iron-sulfur subunit of complex II; SDH

### Application Instructions

Application table	Application	Dilution
	WB	1:1000
Application Note	* The dilutions indicate recommended starting dilutions and the optimal dilutions or concentrations should be determined by the scientist.	
Positive Control	Mouse liver	

### Properties

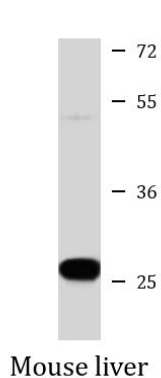
Form	Liquid
Purification	Purification with Protein A and immunogen peptide.
Buffer	PBS and 0.09% (W/V) Sodium azide.
Preservative	0.09% (W/V) Sodium azide.
Storage instruction	For continuous use, store undiluted antibody at 2-8°C for up to a week. For long-term storage, aliquot and store at -20°C or below. Storage in frost free freezers is not recommended. Avoid repeated freeze/thaw cycles. Suggest spin the vial prior to opening. The antibody solution should be gently mixed before use.
Note	For laboratory research only, not for drug, diagnostic or other use.

### Bioinformation

Gene Symbol	SDHB
Gene Full Name	succinate dehydrogenase complex, subunit B, iron sulfur (Ip)
Background	Complex II of the respiratory chain, which is specifically involved in the oxidation of succinate, carries electrons from FADH to CoQ. The complex is composed of four nuclear-encoded subunits and is localized in the mitochondrial inner membrane. The iron-sulfur subunit is highly conserved and contains three cysteine-rich clusters which may comprise the iron-sulfur centers of the enzyme. Sporadic and familial mutations in this gene result in paragangliomas and pheochromocytoma, and support a link between mitochondrial dysfunction and tumorigenesis. [provided by RefSeq, Jul 2008]
Function	Iron-sulfur protein (IP) subunit of succinate dehydrogenase (SDH) that is involved in complex II of the mitochondrial electron transport chain and is responsible for transferring electrons from succinate to ubiquinone (coenzyme Q). [UniProt]
Calculated Mw	32 kDa
Cellular Localization	Mitochondrion inner membrane; Peripheral membrane protein; Matrix side. [UniProt]

## Images

---



ARG40972 anti-SDHB antibody WB image

Western blot: Mouse liver lysate stained with ARG40972 anti-SDHB antibody at 1:1000 dilution.