

ARG40928 anti-Osteocalcin antibody

Package: 50 µg
Store at: -20°C

Summary

Product Description	Rabbit Polyclonal antibody recognizes Osteocalcin
Tested Reactivity	Hu
Tested Application	IHC-P
Host	Rabbit
Clonality	Polyclonal
Isotype	IgG
Target Name	Osteocalcin
Species	Human
Immunogen	Recombinant protein corresponding to Y52-V100 of Human Osteocalcin.
Conjugation	Un-conjugated
Alternate Names	OCN; Gamma-carboxyglutamic acid-containing protein; Osteocalcin; OC; Bone Gla protein; BGP

Application Instructions

Application table	Application	Dilution
	IHC-P	1:200 - 1:1000

Application Note * The dilutions indicate recommended starting dilutions and the optimal dilutions or concentrations should be determined by the scientist.

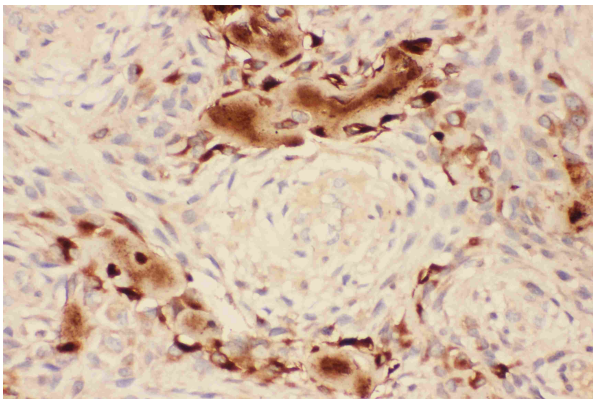
Properties

Form	Liquid
Purification	Affinity purification with immunogen.
Buffer	0.2% Na ₂ HPO ₄ , 0.9% NaCl, 0.05% Sodium azide and 5% BSA.
Preservative	0.05% Sodium azide
Stabilizer	5% BSA
Concentration	0.5 mg/ml
Storage instruction	For continuous use, store undiluted antibody at 2-8°C for up to a week. For long-term storage, aliquot and store at -20°C or below. Storage in frost free freezers is not recommended. Avoid repeated freeze/thaw cycles. Suggest spin the vial prior to opening. The antibody solution should be gently mixed before use.
Note	For laboratory research only, not for drug, diagnostic or other use.

Bioinformation

Gene Symbol	BGLAP
Gene Full Name	bone gamma-carboxyglutamate (gla) protein
Background	This gene encodes a highly abundant bone protein secreted by osteoblasts that regulates bone remodeling and energy metabolism. The encoded protein contains a Gla (gamma carboxyglutamate) domain, which functions in binding to calcium and hydroxyapatite, the mineral component of bone. Serum osteocalcin levels may be negatively correlated with metabolic syndrome. Read-through transcription exists between this gene and the neighboring upstream gene, PMF1 (polyamine-modulated factor 1), but the encoded protein only shows sequence identity with the upstream gene product. [provided by RefSeq, Jun 2015]
Function	Constitutes 1-2% of the total bone protein. It binds strongly to apatite and calcium. [UniProt]
Calculated Mw	11 kDa
PTM	Gamma-carboxyglutamate residues are formed by vitamin K dependent carboxylation. These residues are essential for the binding of calcium. [UniProt]
Cellular Localization	Secreted. [UniProt]

Images



ARG40928 anti-Osteocalcin antibody IHC-P image

Immunohistochemistry: Paraffin-embedded Human osteosarcoma tissue stained with ARG40928 anti-Osteocalcin antibody.