

ARG40918
anti-IGF2 antibodyPackage: 100 µl
Store at: -20°C

Summary

Product Description	Rabbit Polyclonal antibody recognizes IGF2
Tested Reactivity	Hu, Ms
Tested Application	FACS, IHC-P, WB
Host	Rabbit
Clonality	Polyclonal
Isotype	IgG
Target Name	IGF2
Species	Human
Immunogen	KLH-conjugated synthetic peptide between aa. 39-68 of Human IGF2.
Conjugation	Un-conjugated
Alternate Names	Somatomedin-A; Insulin-like growth factor II; IGF-II; PP9974; GRDF; C11orf43; T3M-11-derived growth factor

Application Instructions

Application table	Application	Dilution
	FACS	1:15 - 1:30
	IHC-P	1:50 - 1:100
	WB	1:500 - 1:2000

Application Note * The dilutions indicate recommended starting dilutions and the optimal dilutions or concentrations should be determined by the scientist.

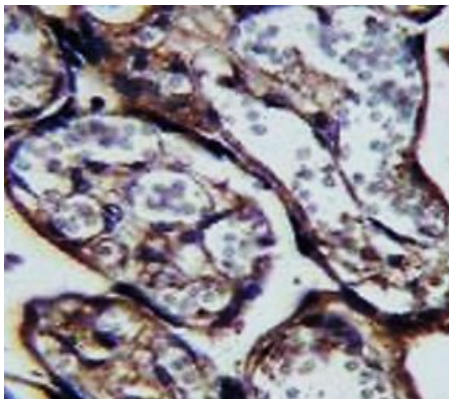
Properties

Form	Liquid
Purification	Purification with Protein A and immunogen peptide.
Buffer	PBS and 0.09% (W/V) Sodium azide.
Preservative	0.09% (W/V) Sodium azide.
Storage instruction	For continuous use, store undiluted antibody at 2-8°C for up to a week. For long-term storage, aliquot and store at -20°C or below. Storage in frost free freezers is not recommended. Avoid repeated freeze/thaw cycles. Suggest spin the vial prior to opening. The antibody solution should be gently mixed before use.
Note	For laboratory research only, not for drug, diagnostic or other use.

Bioinformation

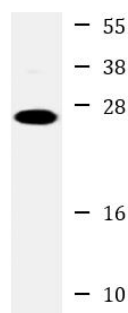
Gene Symbol	IGF2
Gene Full Name	insulin-like growth factor 2
Background	This gene encodes a member of the insulin family of polypeptide growth factors, which are involved in development and growth. It is an imprinted gene, expressed only from the paternal allele, and epigenetic changes at this locus are associated with Wilms tumour, Beckwith-Wiedemann syndrome, rhabdomyosarcoma, and Silver-Russell syndrome. A read-through INS-IGF2 gene exists, whose 5' region overlaps the INS gene and the 3' region overlaps this gene. Alternatively spliced transcript variants encoding different isoforms have been found for this gene. [provided by RefSeq, Oct 2010]
Function	<p>The insulin-like growth factors possess growth-promoting activity. In vitro, they are potent mitogens for cultured cells. IGF-II is influenced by placental lactogen and may play a role in fetal development.</p> <p>Preptin undergoes glucose-mediated co-secretion with insulin, and acts as physiological amplifier of glucose-mediated insulin secretion. Exhibits osteogenic properties by increasing osteoblast mitogenic activity through phosphoactivation of MAPK1 and MAPK3. [UniProt]</p>
Calculated Mw	20 kDa
PTM	<p>O-glycosylated with core 1 or possibly core 8 glycans. Thr-96 is a minor glycosylation site compared to Thr-99.</p> <p>Proteolytically processed by PCSK4, proIGF2 is cleaved at Arg-128 and Arg-92 to generate big-IGF2 and mature IGF2. [UniProt]</p>
Cellular Localization	Secreted. [UniProt]

Images



ARG40918 anti-IGF2 antibody IHC-P image

Immunohistochemistry: Formalin-fixed and paraffin-embedded Human placenta tissue stained with ARG40918 anti-IGF2 antibody.

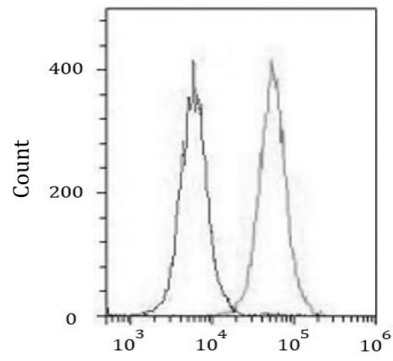


Mouse liver

ARG40918 anti-IGF2 antibody WB image

Western blot: 20 µg of Mouse liver lysate stained with ARG40918 anti-IGF2 antibody at 1:2000 dilution.

ARG40918 anti-IGF2 antibody FACS image



Flow Cytometry: HeLa cells were fixed with 2% paraformaldehyde (10 min) and then permeabilized with 90% methanol for 10 min. The cells were then incubated in 2% BSA to block non-specific protein-protein interactions followed by ARG40918 anti-IGF2 antibody (green) at 1:25 dilution for 60 min at 37°C, followed by incubation with DyLight®488 labelled secondary antibody. Isotype control antibody (blue) was Rabbit IgG (1 ug/ 10^6 cells) used under the same conditions. Acquisition of >10000 events was performed.