

ARG40917 anti-IGFBP4 antibody

Package: 100 µl
Store at: -20°C

Summary

Product Description	Rabbit Polyclonal antibody recognizes IGFBP4
Tested Reactivity	Hu, Ms, Rat
Predict Reactivity	Bov, Pig
Tested Application	FACS, WB
Host	Rabbit
Clonality	Polyclonal
Isotype	IgG
Target Name	IGFBP4
Species	Human
Immunogen	KLH-conjugated synthetic peptide corresponding to aa. 66-92 of Human IGFBP4.
Conjugation	Un-conjugated
Alternate Names	IBP4; IBP-4; IGFBP-4; Insulin-like growth factor-binding protein 4; HT29-IGFBP; IGF-binding protein 4; BP-4

Application Instructions

Application table	Application	Dilution
	FACS	1:15 - 1:30
	WB	1:500 - 1:2000
Application Note	* The dilutions indicate recommended starting dilutions and the optimal dilutions or concentrations should be determined by the scientist.	
Observed Size	28 kDa	

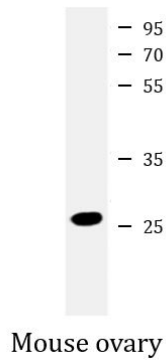
Properties

Form	Liquid
Purification	Purification with Protein A and immunogen peptide.
Buffer	PBS and 0.09% (W/V) Sodium azide.
Preservative	0.09% (W/V) Sodium azide.
Storage instruction	For continuous use, store undiluted antibody at 2-8°C for up to a week. For long-term storage, aliquot and store at -20°C or below. Storage in frost free freezers is not recommended. Avoid repeated freeze/thaw cycles. Suggest spin the vial prior to opening. The antibody solution should be gently mixed before use.
Note	For laboratory research only, not for drug, diagnostic or other use.

Bioinformation

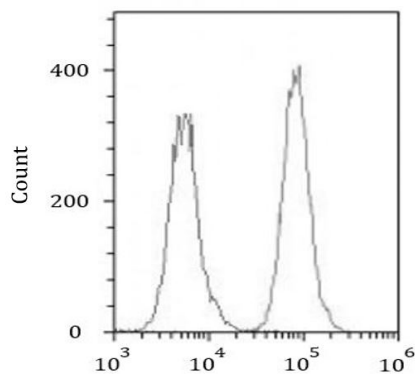
Gene Symbol	IGFBP4
Gene Full Name	insulin-like growth factor binding protein 4
Background	This gene is a member of the insulin-like growth factor binding protein (IGFBP) family and encodes a protein with an IGFBP domain and a thyroglobulin type-I domain. The protein binds both insulin-like growth factors (IGFs) I and II and circulates in the plasma in both glycosylated and non-glycosylated forms. Binding of this protein prolongs the half-life of the IGFs and alters their interaction with cell surface receptors. [provided by RefSeq, Jul 2008]
Function	IGF-binding proteins prolong the half-life of the IGFs and have been shown to either inhibit or stimulate the growth promoting effects of the IGFs on cell culture. They alter the interaction of IGFs with their cell surface receptors. [UniProt]
Calculated Mw	28 kDa
Cellular Localization	Secreted. [UniProt]

Images



ARG40917 anti-IGFBP4 antibody WB image

Western blot: 20 µg of Mouse ovary lysate stained with ARG40917 anti-IGFBP4 antibody at 1:2000 dilution.



ARG40917 anti-IGFBP4 antibody FACS image

Flow Cytometry: A549 cells were fixed with 2% paraformaldehyde (10 min) and then permeabilized with 90% methanol for 10 min. The cells were then incubated in 2% BSA to block non-specific protein-protein interactions followed by ARG40917 anti-IGFBP4 antibody (green) at 1:25 dilution for 60 min at 37°C, followed by incubation with DyLight®488 labelled secondary antibody. Isotype control antibody (blue) was Rabbit IgG1 (1 µg/ 10^6 cells) used under the same conditions. Acquisition of >10000 events was performed.