

**ARG40881**  
**anti-ARGLU1 antibody**Package: 100 µl  
Store at: -20°C

### Summary

Product Description	Rabbit Polyclonal antibody recognizes ARGLU1
Tested Reactivity	Hu
Predict Reactivity	Bov
Tested Application	FACS, IHC-P, WB
Host	Rabbit
Clonality	Polyclonal
Isotype	IgG
Target Name	ARGLU1
Species	Human
Immunogen	KLH-conjugated synthetic peptide corresponding to aa. 48-74 of Human ARGLU1.
Conjugation	Un-conjugated
Alternate Names	Arginine and glutamate-rich protein 1

### Application Instructions

Application table	Application	Dilution
	FACS	1:10 - 1:50
	IHC-P	1:50 - 1:100
	WB	1:1000
Application Note	* The dilutions indicate recommended starting dilutions and the optimal dilutions or concentrations should be determined by the scientist.	
Observed Size	~ 38 kDa	

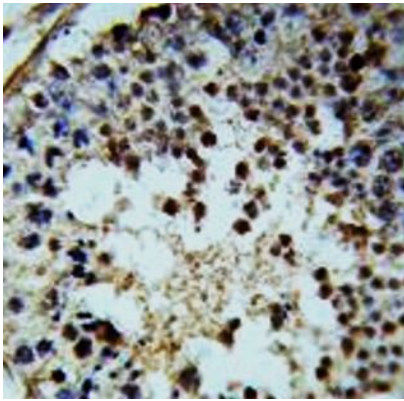
### Properties

Form	Liquid
Purification	Purification with Protein A and immunogen peptide.
Buffer	PBS and 0.09% (W/V) Sodium azide.
Preservative	0.09% (W/V) Sodium azide.
Storage instruction	For continuous use, store undiluted antibody at 2-8°C for up to a week. For long-term storage, aliquot and store at -20°C or below. Storage in frost free freezers is not recommended. Avoid repeated freeze/thaw cycles. Suggest spin the vial prior to opening. The antibody solution should be gently mixed before use.
Note	For laboratory research only, not for drug, diagnostic or other use.

## Bioinformation

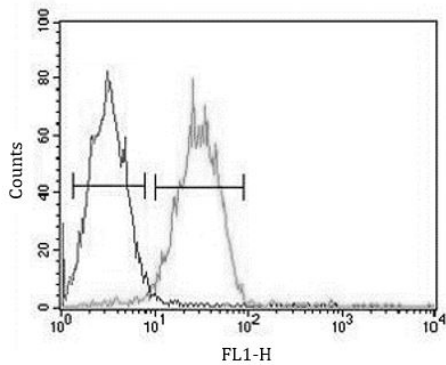
Gene Symbol	ARGLU1
Gene Full Name	arginine and glutamate rich 1
Function	Required for the estrogen-dependent expression of ESR1 target genes. Can act in cooperation with MED1. [UniProt]
Calculated Mw	33 kDa
Cellular Localization	Nucleus. Note=Recruited, in an estrogen-dependent manner, to ESR1 target gene promoters. Colocalizes with MED1. [UniProt]

## Images



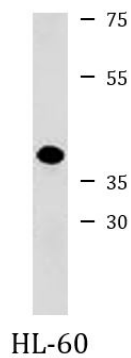
ARG40881 anti-ARGLU1 antibody IHC-P image

Immunohistochemistry: Formalin-fixed and paraffin-embedded Human testis tissue stained with ARG40881 anti-ARGLU1 antibody.



ARG40881 anti-ARGLU1 antibody FACS image

Flow Cytometry: Jurkat cells stained with ARG40881 anti-ARGLU1 antibody (right histogram) or without primary antibody as control (left histogram), followed by incubation with FITC labelled secondary antibody.



ARG40881 anti-ARGLU1 antibody WB image

Western blot: 35 µg of HL-60 cell lysate stained with ARG40881 anti-ARGLU1 antibody.